

FOR LEASE | BUILDING 3

6201 N CLASSEN BLVD
OKLAHOMA CITY, OK 73116



CUSHMAN &
WAKEFIELD

COMMERCIAL
OKLAHOMA



**LEASE
RATE:**

\$21.00 NNN

PROPERTY HIGHLIGHTS

Located south of NW 63rd on Classen Blvd, Building 14 is on the east side of the Chesapeake Campus and features over 200 offices on 5 floors. The area is quickly densifying with new high-density multifamily and hotel development within walking distance to OKC's most upscale shopping centers, The Triangle at Classen Curve, Classen Curve and Nichols Hills Plaza.

MICAH SHERMAN

+1 405 488 5548

msherman@commercialoklahoma.com

CLASS "A" OFFICE FOR LEASE

- **BUILDING SIZE:** ± 52,290 SF
 - BASEMENT:** ± 10,458 SF
 - 1ST FLOOR:** ± 10,458 SF
 - 2ND FLOOR:** ± 10,458 SF
 - 3RD FLOOR:** ± 10,458 SF
 - 4TH FLOOR:** ± 10,458 SF
- **OFFICE COUNT:** 205

VIVIENNE VOGLER

+1 405 570 8595

vvogler@commercialoklahoma.com

**CONTACT
US**

TRAVIS MASON

+1 405 249 0655

tmason@commercialoklahoma.com

FOR LEASE | BUILDING 3

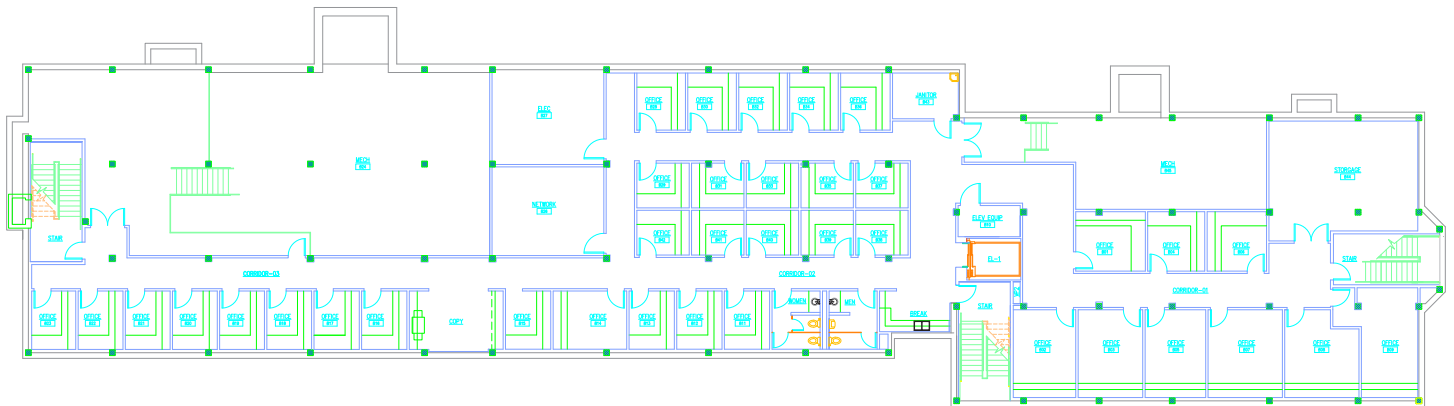
6201 N CLASSEN BLVD
OKLAHOMA CITY, OK 73116



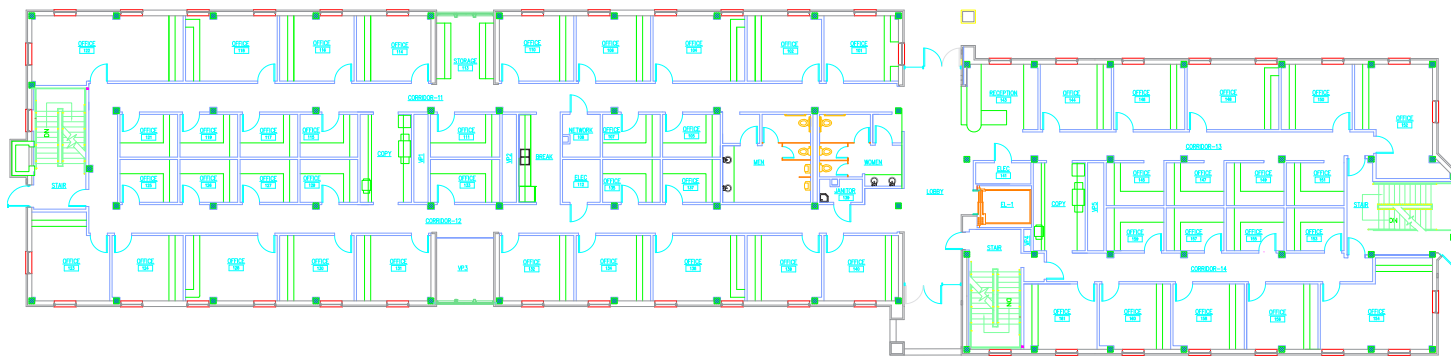
CUSHMAN &
WAKEFIELD

COMMERCIAL
OKLAHOMA

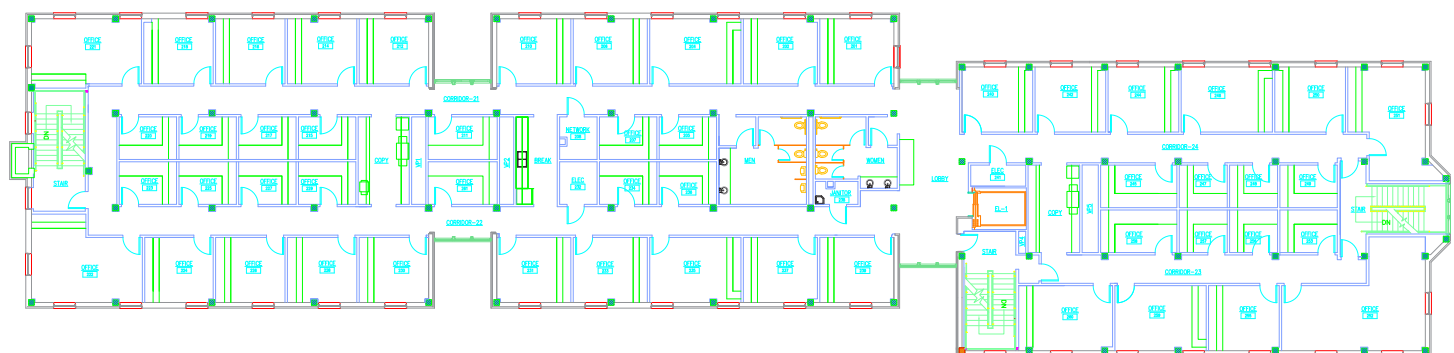
BASEMENT



1ST FLOOR



2ND FLOOR



FOR LEASE | BUILDING 3

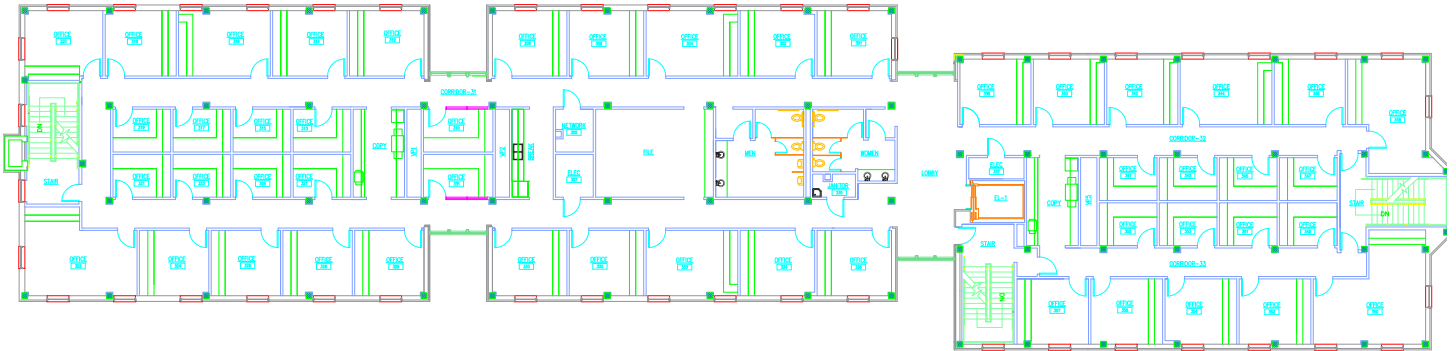
6201 N CLASSEN BLVD
OKLAHOMA CITY, OK 73116



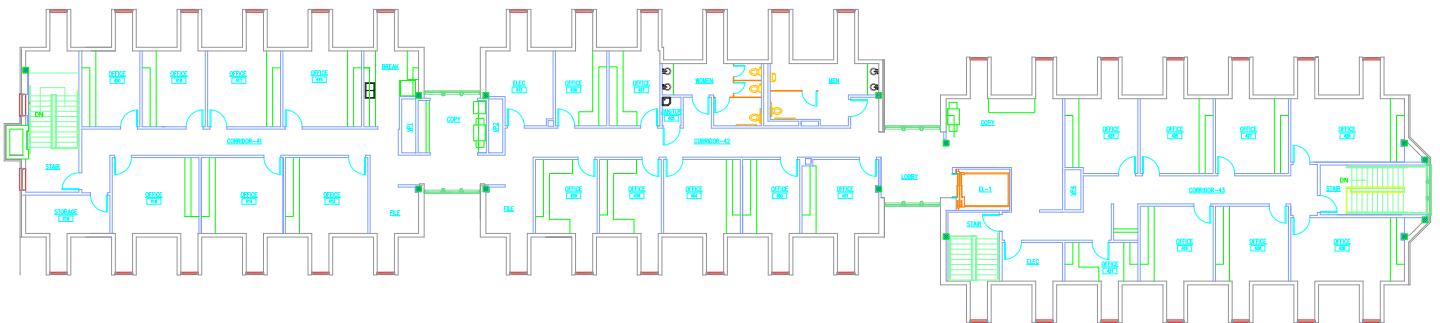
CUSHMAN &
WAKEFIELD

COMMERCIAL
OKLAHOMA

3RD FLOOR



4TH FLOOR



CONTACT
US

MICAH SHERMAN

+1 405 488 5548

msherman@commercialoklahoma.com

VIVIENNE VOGLER

+1 405 570 8595

vvogler@commercialoklahoma.com

TRAVIS MASON

+1 405 249 0655

tmason@commercialoklahoma.com

OKLAHOMA
CITY

204 N Robinson Ave, Suite 2000, Oklahoma City, OK 73102
+ 1 405 563 5000
commercialoklahoma.com

©2024 Cushman & Wakefield | Commercial Oklahoma. Independently Owned and Operated / A Member of the Cushman & Wakefield Alliance All rights reserved. The information contained in this communication is strictly confidential. This information has been obtained from sources believed to be reliable but has not been verified. No warranty or representation, express or implied, is made as to the condition of the property (or properties) referenced herein or as to the accuracy or completeness of the information contained herein, and same is submitted subject to errors, omissions, change of price, rental or other conditions, withdrawal without notice, and to any special listing conditions imposed by the property owner(s). Any projections, opinions or estimates are subject to uncertainty and do not signify current or future property performance.