

CUSHMAN &
WAKEFIELD

COMMERCIAL
OKLAHOMA

± 117,040 SF

FOR SALE

THE BAPTIST BUILDING

3800 N MAY AVE
OKLAHOMA CITY, OK 73112

FOR SALE

± 117,040 SF | OFFICE
THE BAPTIST BUILDING

3800 N MAY AVE
OKLAHOMA CITY, OK 73112

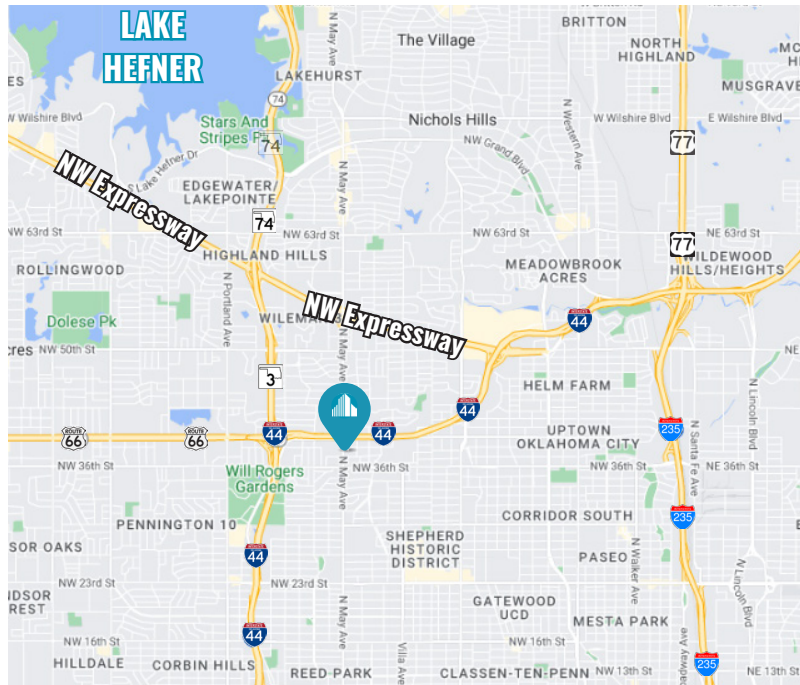


CUSHMAN & WAKEFIELD | COMMERCIAL OKLAHOMA

PROPERTY HIGHLIGHTS

BUILDING SIZE:	± 117,040 SF
TYPICAL FLOOR:	± 19,506 SF
LOT SIZE:	± 3.58 AC
YEAR BUILT:	1984
STORIES:	6
PARKING:	0.85/1000
ZONING:	I-2 Moderate Industrial
SALES PRICE:	\$7,607,600 \$65 psf

The Baptist Building is an ideal owner/user building located in the Northwest Submarket on the northwest corner of NW 38th & May Ave in Oklahoma City. This building is easily accessible and located just minutes from I-44. This building is a multi-tenant office building and it features free surface parking.



THE BAPTIST BUILDING

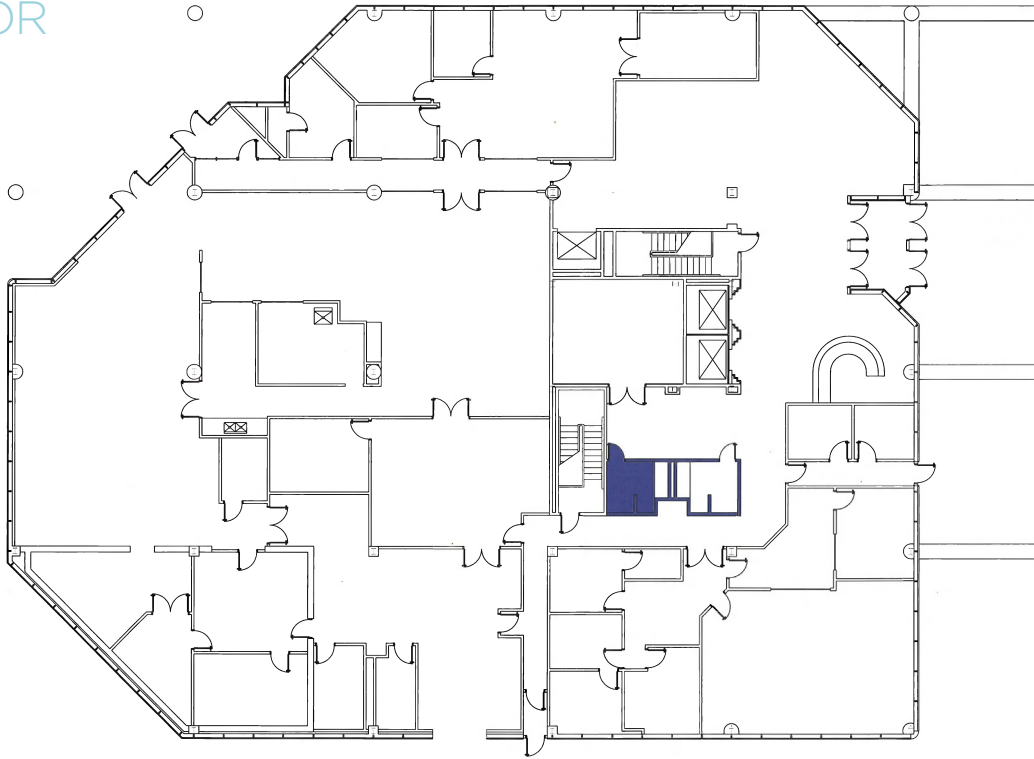
3800 N MAY AVE
OKLAHOMA CITY, OK 73112



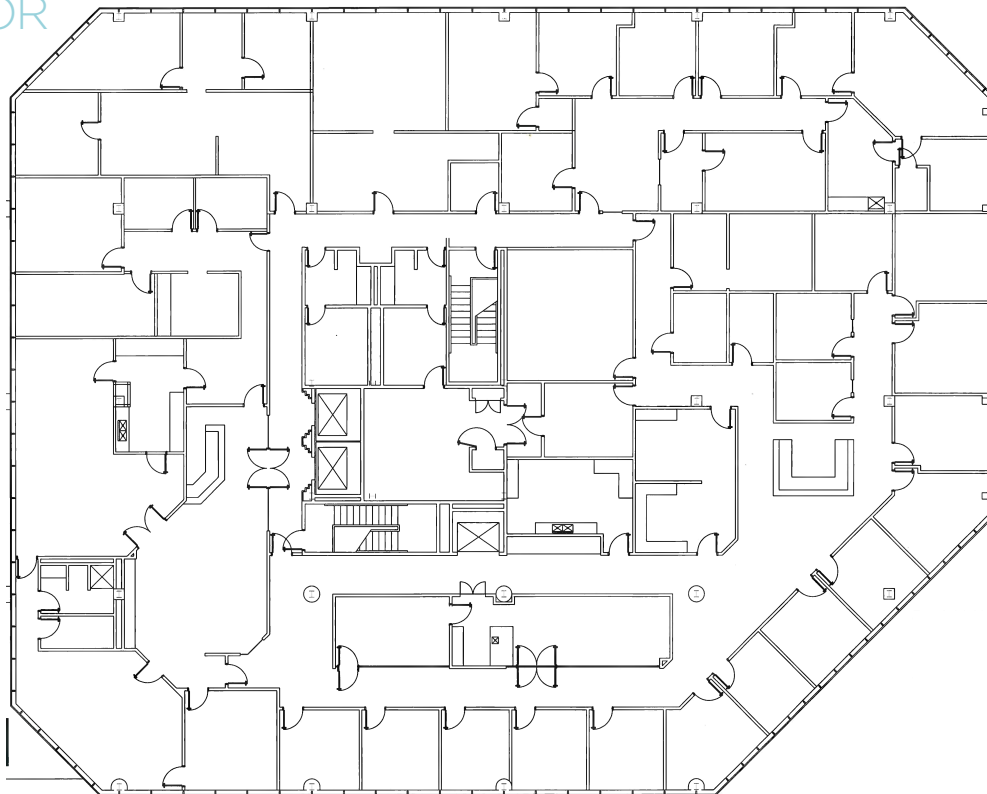
COMMERCIAL
OKLAHOMA

FLOOR PLANS

1ST FLOOR



2ND FLOOR



FOR SALE

THE BAPTIST BUILDING

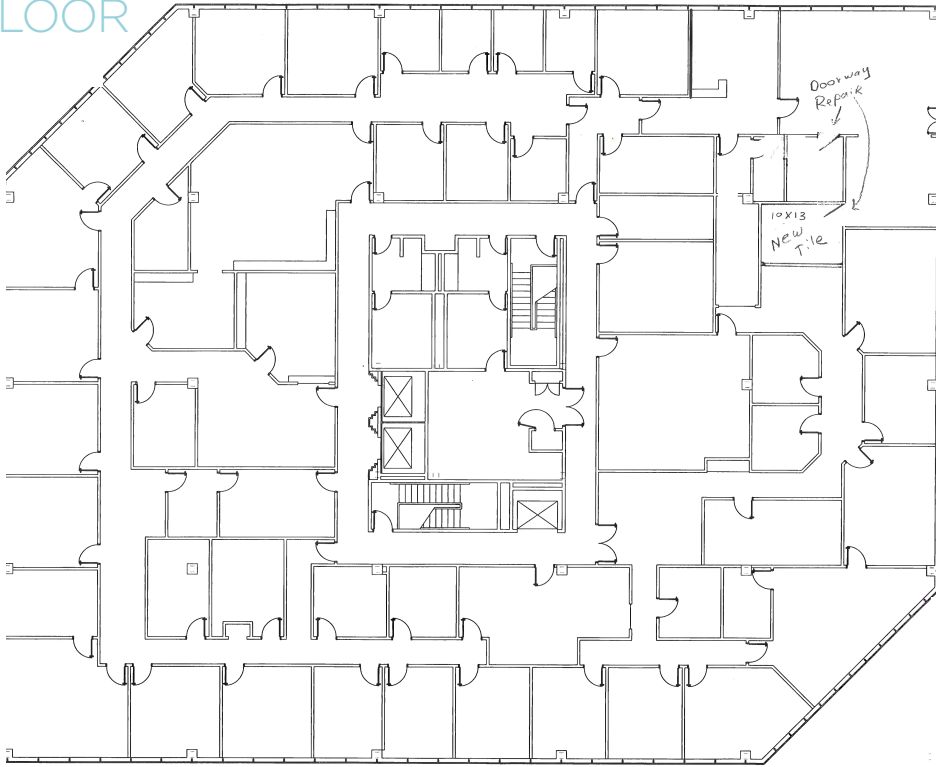
3800 N MAY AVE
OKLAHOMA CITY, OK 73112



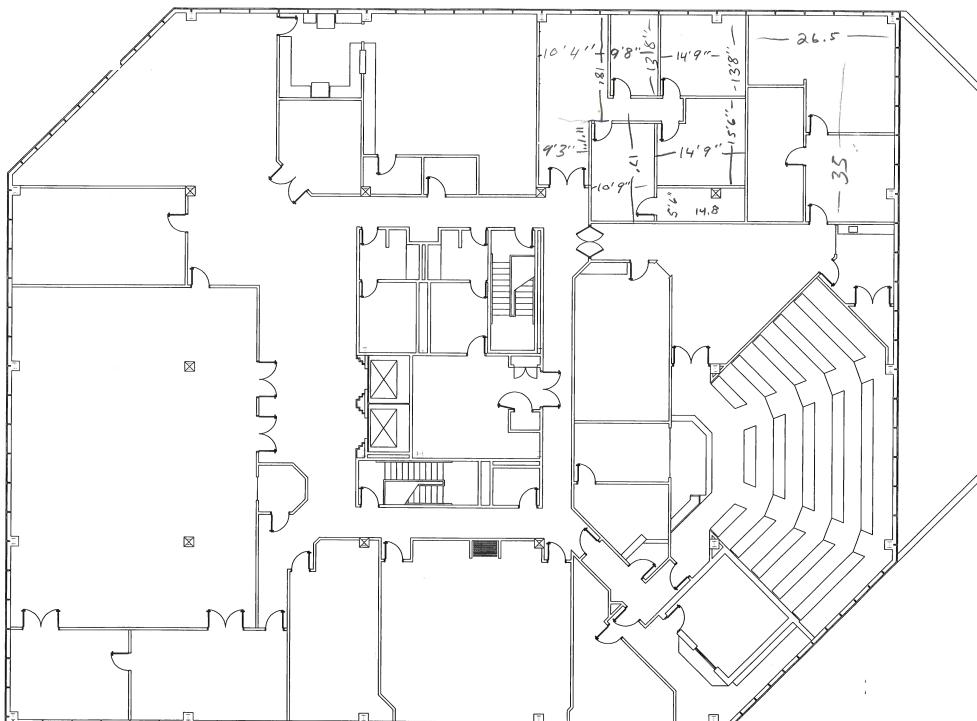
COMMERCIAL
OKLAHOMA

FLOOR PLANS

3RD FLOOR



4TH FLOOR



FOR SALE

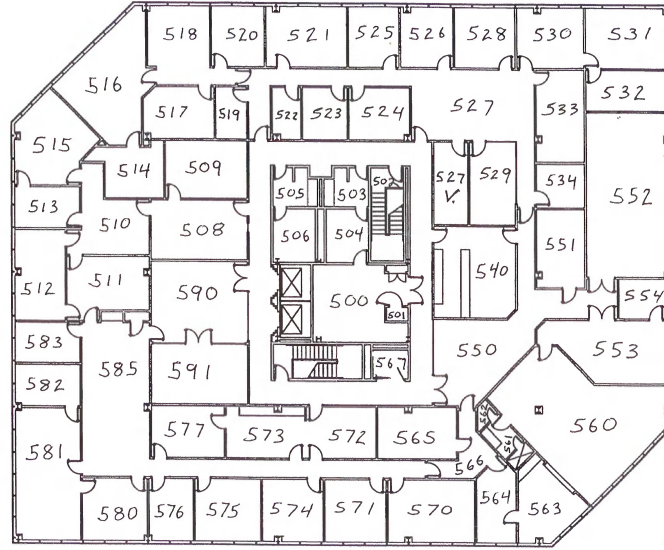
THE BAPTIST BUILDING



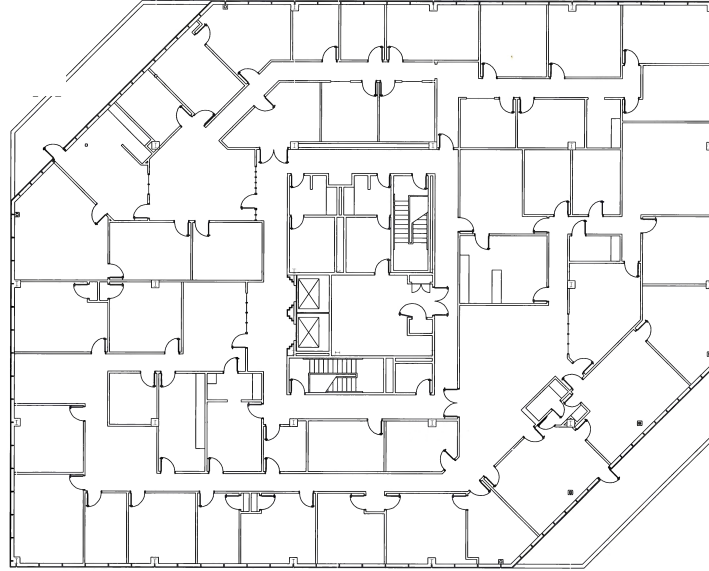
3800 N MAY AVE
OKLAHOMA CITY, OK 73112

FLOOR PLANS

5TH FLOOR



6TH FLOOR



FOR SALE

BROKER CONTACT



VIVIENNE VOGLER
+1 405 570 8585
voglerv@commercialoklahoma.com

MICAH SHERMAN
+1 405 488 5548
msherman@commercialoklahoma.com

TRAVIS C MASON
+1 405 297 9924
tmason@commercialoklahoma.com

