

FOR LEASE | BUILDING 5

6001 N CLASSEN BLVD
OKLAHOMA CITY, OK 73116



CUSHMAN &
WAKEFIELD

COMMERCIAL
OKLAHOMA



LEASE
RATE:

\$21.00 NNN

PROPERTY HIGHLIGHTS

Located on the Northwest corner of NW 60th & Classen Blvd, Building 5 is located on Chesapeake Campus. The area is quickly densifying with new high-density multifamily and hotel development within walking distance to OKC's most upscale shopping centers, The Triangle at Classen Curve, Classen Curve and Nichols Hills Plaza.

CLASS "A" OFFICE FOR LEASE

- **BUILDING SIZE:** ± 64,273 SF
- **BASEMENT:** ± 10,712 SF
- **1ST FLOOR:** ± 10,712 SF
- **2ND FLOOR:** ± 10,712 SF
- **3RD FLOOR:** ± 10,712 SF
- **4TH FLOOR:** ± 10,712 SF
- **5TH FLOOR:** ± 10,712 SF
- **OFFICE COUNT:** 207
- **PARKING RATIO:** 9.00 /1,000
- **CAR PARKS:** 533

CONTACT
US

VIVIENNE VOGLER

+1 405 570 8595

vvogler@commercialoklahoma.com

MICAH SHERMAN

+1 405 488 5548

msherman@commercialoklahoma.com

TRAVIS MASON

+1 405 249 0655

tmason@commercialoklahoma.com

FOR LEASE I BUILDING 5

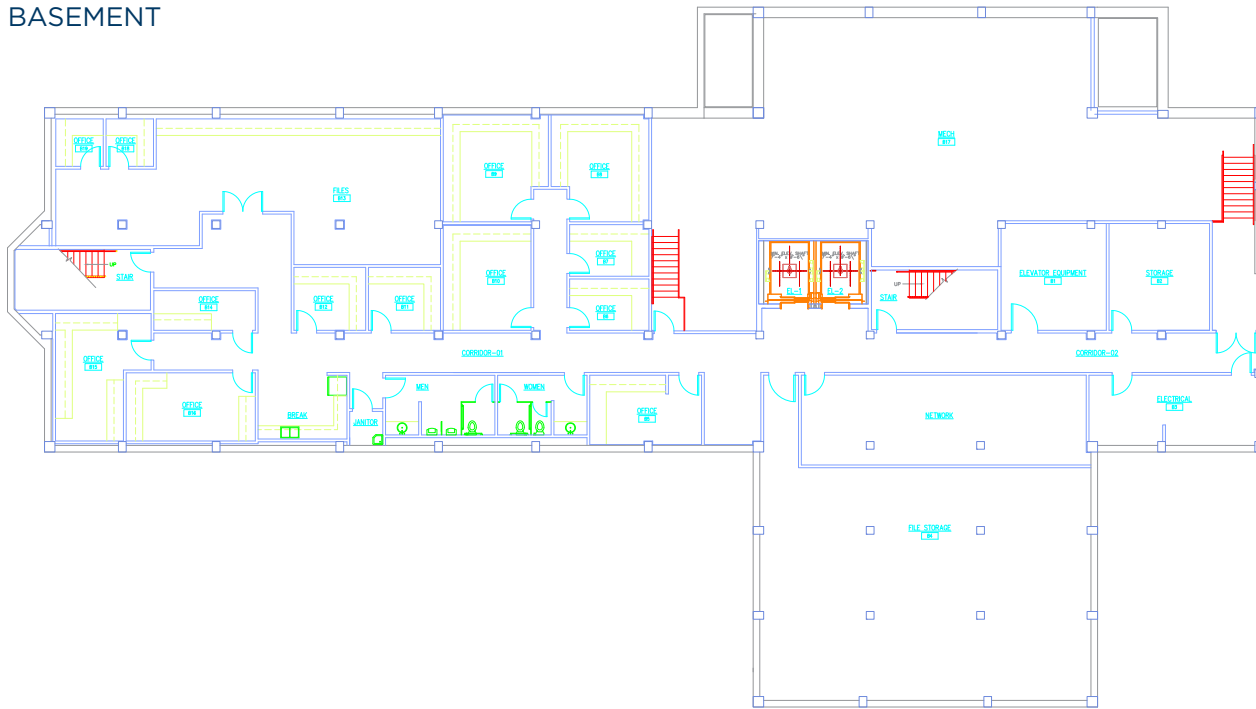
6001 N CLASSEN BLVD
OKLAHOMA CITY, OK 73116



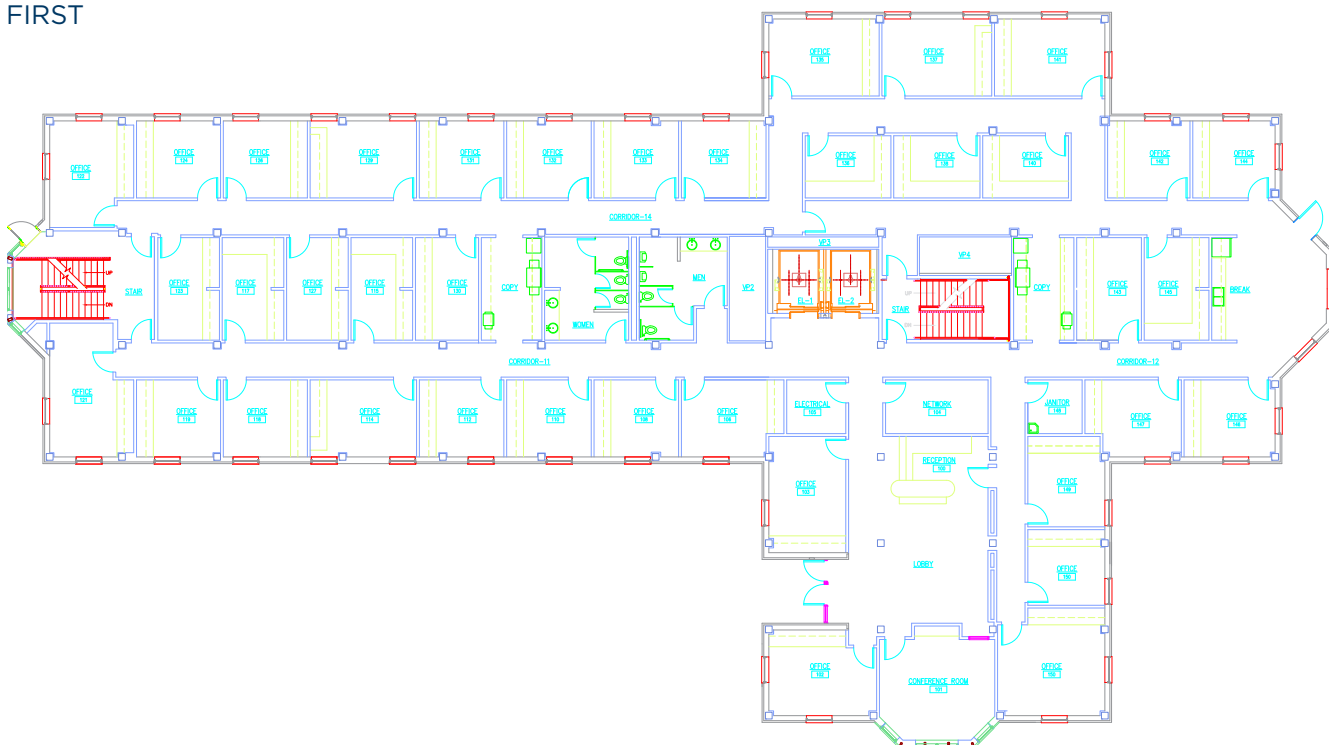
COMMERCIAL
OKLAHOMA

FLOOR PLANS

BASEMENT



FIRST



FOR LEASE I BUILDING 5

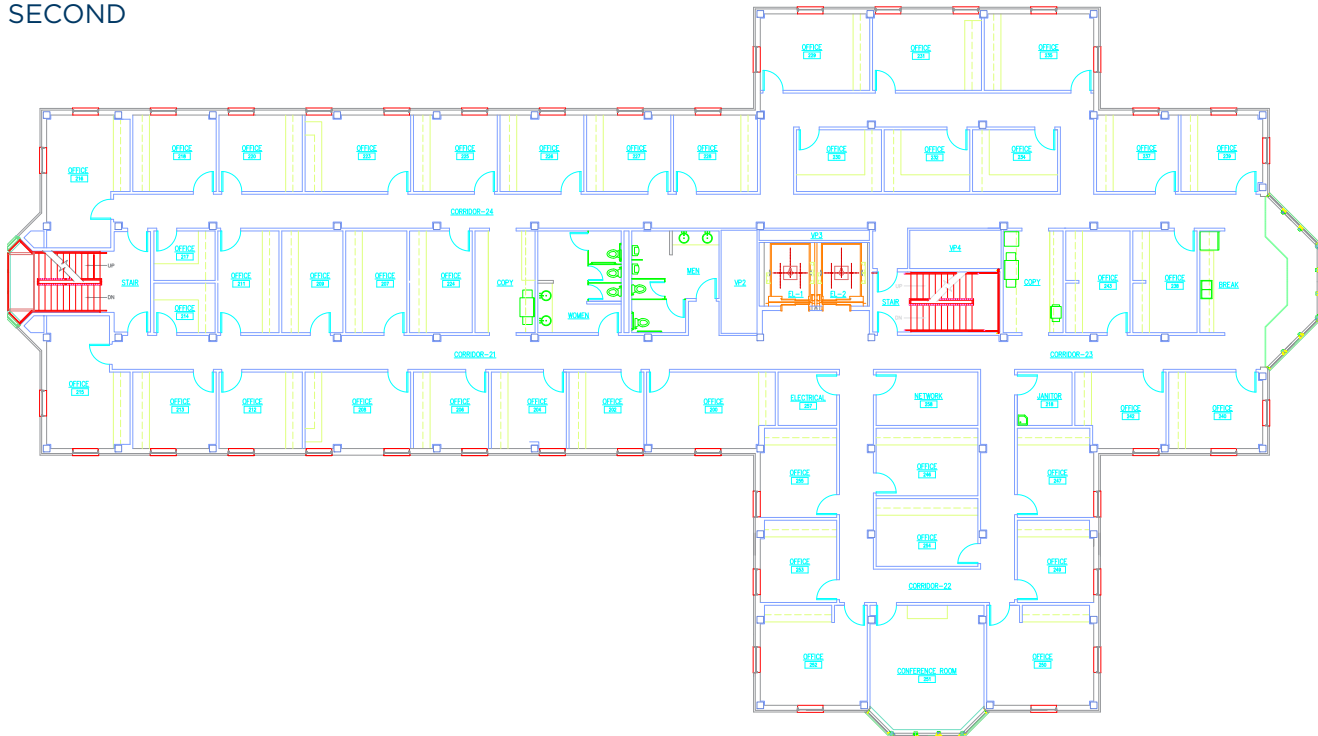
6001 N CLASSEN BLVD
OKLAHOMA CITY, OK 73116



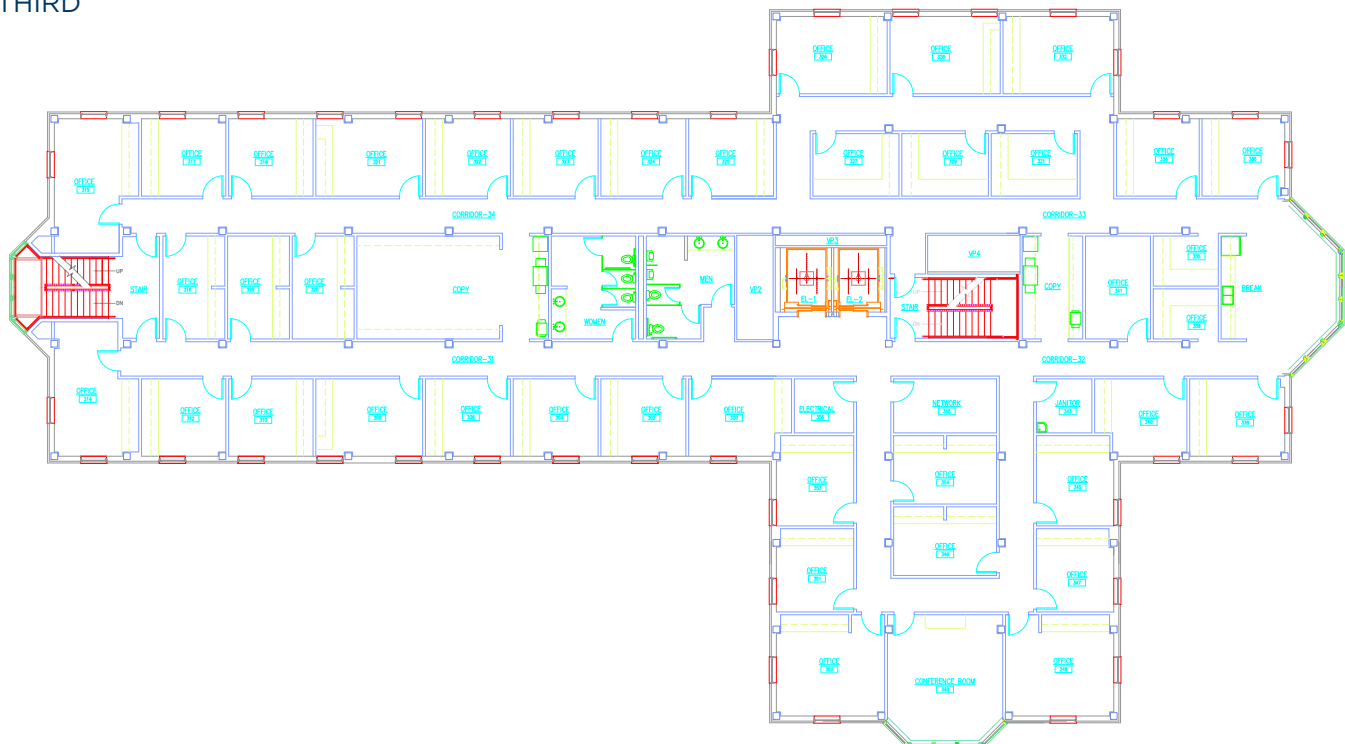
COMMERCIAL
OKLAHOMA

FLOOR PLANS

SECOND



THIRD



FOR LEASE I BUILDING 5

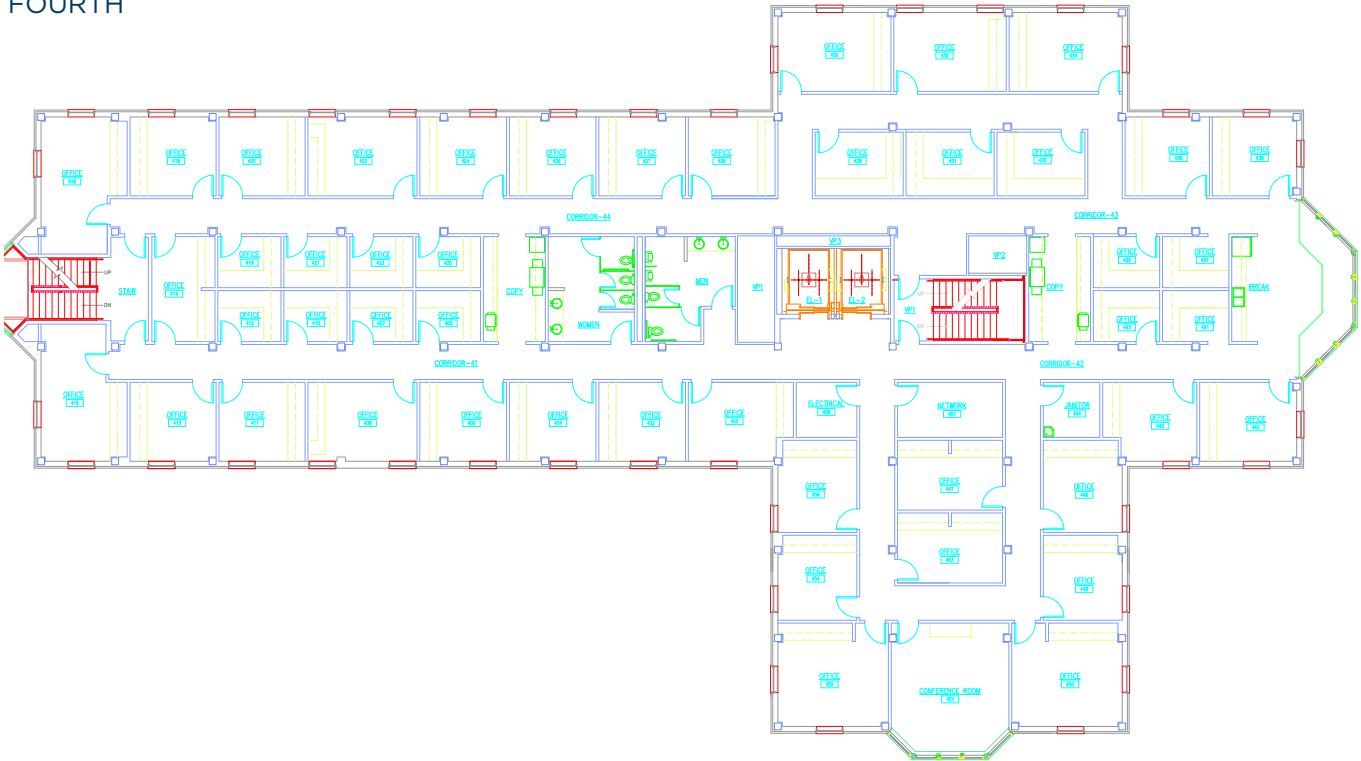
6001 N CLASSEN BLVD
OKLAHOMA CITY, OK 73116



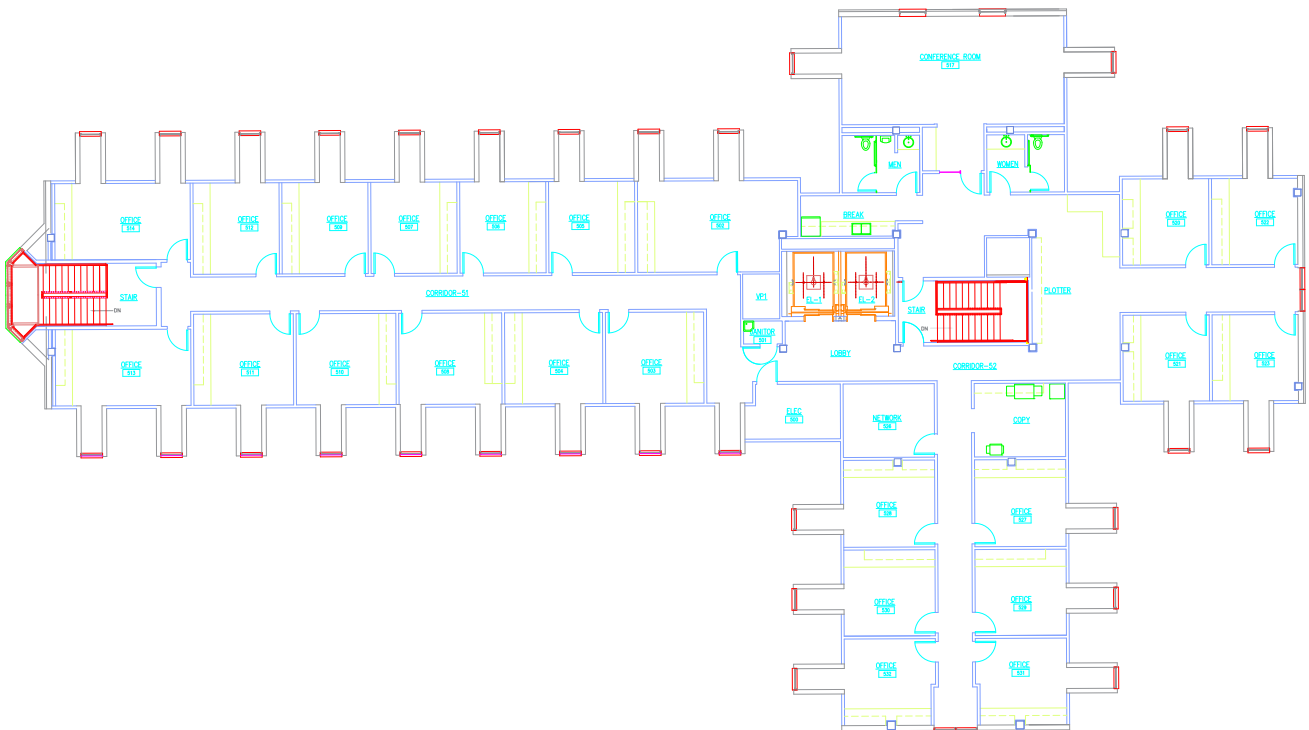
COMMERCIAL
OKLAHOMA

FLOOR PLANS

FOURTH



FIFTH



FOR LEASE | BUILDING 5

6001 N CLASSEN BLVD
OKLAHOMA CITY, OK 73116



CUSHMAN &
WAKEFIELD

COMMERCIAL
OKLAHOMA



CONTACT
US

VIVIENNE VOGLER
+1 405 570 8595
vvogler@commercialoklahoma.com

MICAH SHERMAN
+1 405 488 5548
msherman@commercialoklahoma.com

TRAVIS MASON
+1 405 249 0655
tmason@commercialoklahoma.com

OKLAHOMA
CITY

204 N Robinson Ave, Suite 2000, Oklahoma City, OK 73102
+ 1 405 563 5000
commercialoklahoma.com

©2024 Cushman & Wakefield | Commercial Oklahoma. Independently Owned and Operated / A Member of the Cushman & Wakefield Alliance All rights reserved. The information contained in this communication is strictly confidential. This information has been obtained from sources believed to be reliable but has not been verified. No warranty or representation, express or implied, is made as to the condition of the property (or properties) referenced herein or as to the accuracy or completeness of the information contained herein, and same is submitted subject to errors, omissions, change of price, rental or other conditions, withdrawal without notice, and to any special listing conditions imposed by the property owner(s). Any projections, opinions or estimates are subject to uncertainty and do not signify current or future property performance.