

FOR LEASE | COUNTRY CLUB VILLAGE

2802 W COUNTRY CLUB DR
OKLAHOMA CITY, OK 73116



COMMERCIAL
OKLAHOMA



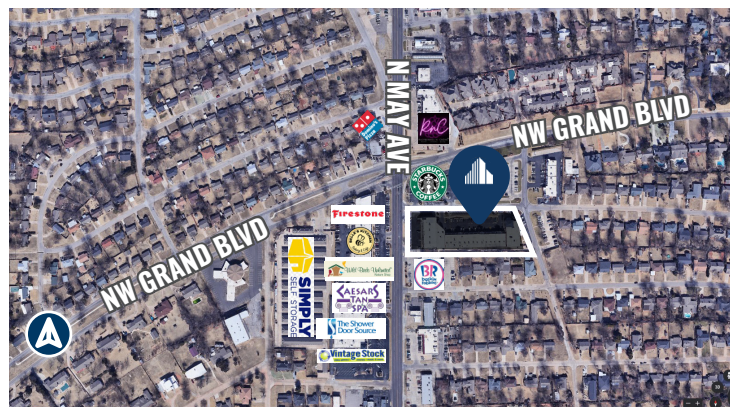
GATEWAY TO NICHOLS HILLS

± 15,000 SF

PROPERTY HIGHLIGHTS

Office space for lease on the corner of NW Grand Blvd & N May Ave in North Oklahoma City.

- BUILDING SIZE: ± 31,242 SF
- **SPACE AVAILABLE:** ± 15,000 SF
- LEASE RATE: \$25.00 FSG
- Available: 7/1/2024
- On-site parking



CONTACT US

TRAVIS MASON
+1 405 249 0655
tmason@commercialoklahoma.com

MICAH SHERMAN
+1 405 488 5548
msherman@commercialoklahoma.com

VIVIENNE VOGLER
+1 405 570 8595
vvogler@commercialoklahoma.com

FOR LEASE | COUNTRY CLUB VILLAGE

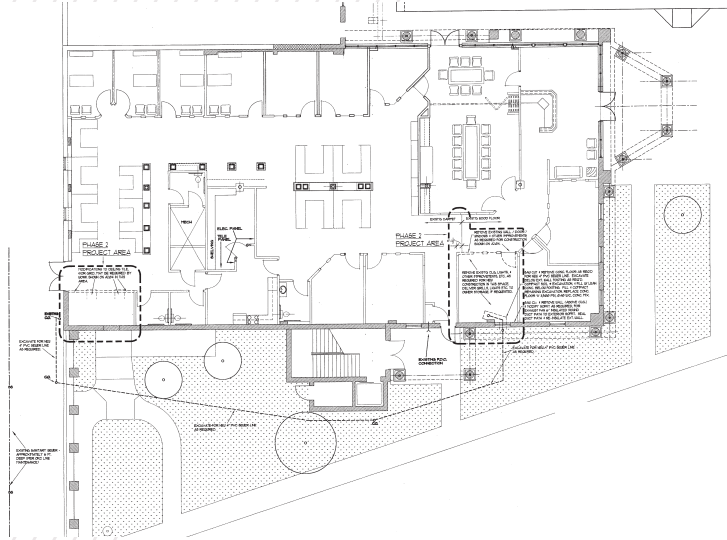
2802 W COUNTRY CLUB DR
OKLAHOMA CITY, OK 73116



COMMERCIAL
OKLAHOMA

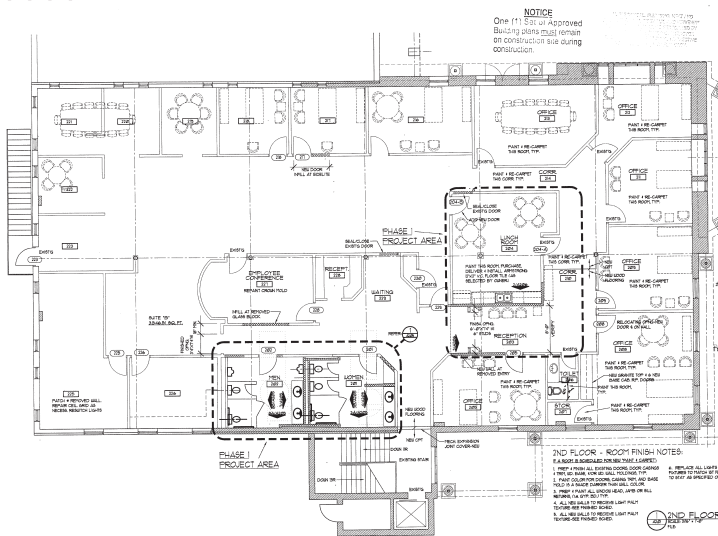
FLOOR PLANS

1ST FLOOR



**LEASE
RATE:**
\$25.00 FSG

2ND FLOOR



**OKLAHOMA
CITY**

204 N Robinson Ave, Suite 2000, Oklahoma City, OK 73102
+ 1 405 563 5000
commercialoklahoma.com



©2024 Cushman & Wakefield | Commercial Oklahoma. Independently Owned and Operated / A Member of the Cushman & Wakefield Alliance All rights reserved. The information contained in this communication is strictly confidential. This information has been obtained from sources believed to be reliable but has not been verified. No warranty or representation, express or implied, is made as to the condition of the property (or properties) referenced herein or as to the accuracy or completeness of the information contained herein, and same is submitted subject to errors, omissions, change of price, rental or other conditions, withdrawal without notice, and to any special listing conditions imposed by the property owner(s). Any projections, opinions or estimates are subject to uncertainty and do not signify current or future property performance.