

INDUSTRIAL WAREHOUSE

8153 E 44TH ST
TULSA, OK 74145

± 4,136 SF / ± 1.07 ACRES



COMMERCIAL
OKLAHOMA



PROPERTY HIGHLIGHTS

- **BUILDING SIZE:** ±4,136 SF
 - Office: 1,162 SF
 - Warehouse: 2,974 SF
 - **LOT SIZE:** ± 1.07 AC
 - **OVERHEAD:** 12' X 10'
 - **PARKING:** 10 SURFACE SPACES
 - **LEASE PRICE:** \$7.50/NNN
-
- CLIMATE-CONTROLLED WAREHOUSE
 - YARD AREA WITH POTENTIAL TO SHARE WITH CO-TENANT
 - WAREHOUSE ON SEPARATE POWER SUPPLY



CONTACT US

JARED ANDRESEN, SIOR

President

+1 918 359 3520

jandresen@commercialoklahoma.com

NATALIE BURKE

Associate

+1 918 710 2650

nburke@commercialoklahoma.com

INDUSTRIAL WAREHOUSE

8153 E 44TH ST
TULSA, OK 74145

± 4,136 / ± 1.07 ACRES

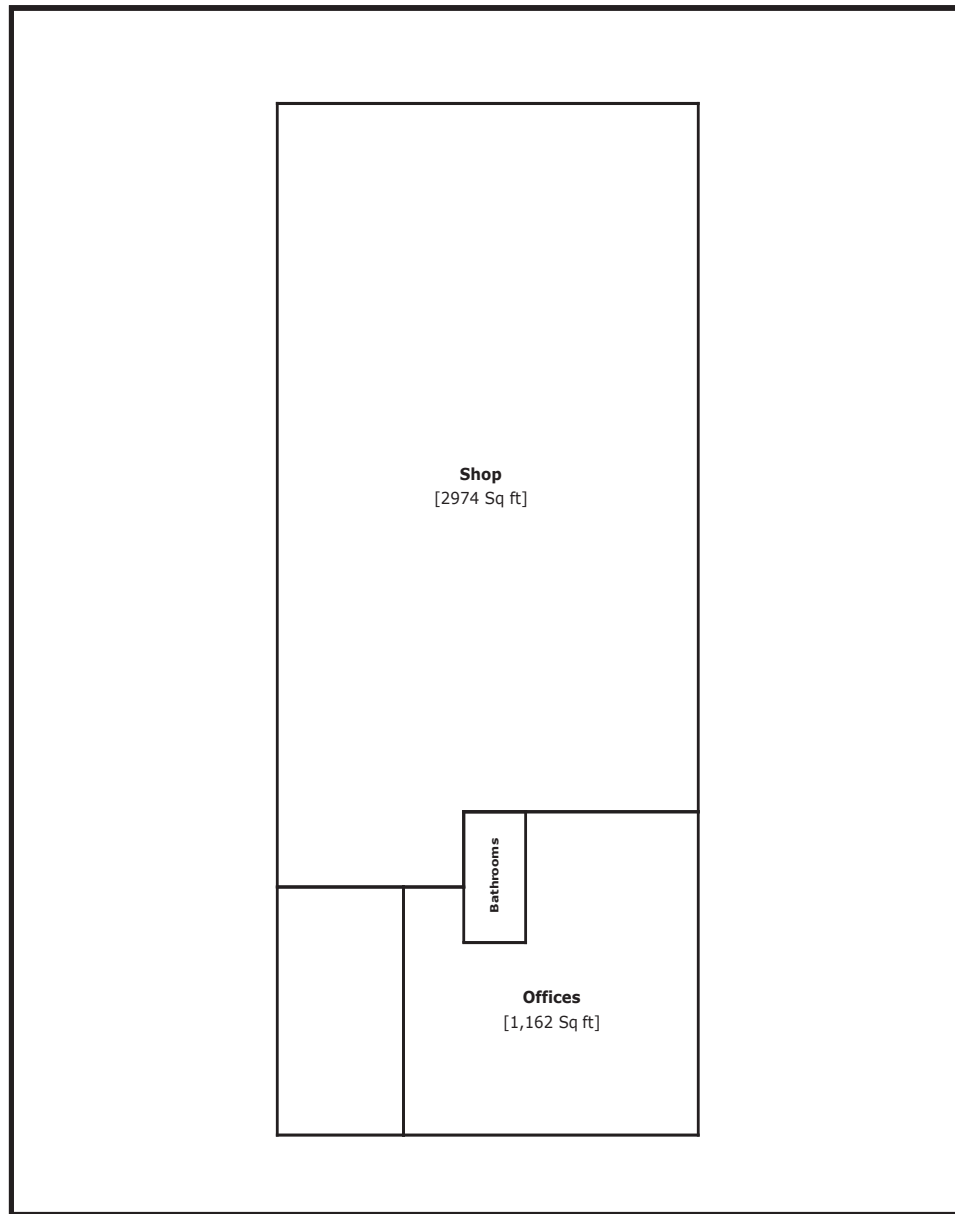


CUSHMAN &
WAKEFIELD

COMMERCIAL
OKLAHOMA

FOR LEASE

PROPERTY FLOORPLAN



INDUSTRIAL WAREHOUSE

8153 E 44TH ST
TULSA, OK 74145

± 4,136 / ± 1.07 ACRES



CUSHMAN &
WAKEFIELD

COMMERCIAL
OKLAHOMA

FOR LEASE

PROPERTY PHOTOS



LEASE
PRICE:
\$7.50/NNN



TULSA
OFFICE

111 S Elgin Ave, Suite 100, Tulsa, OK 74120
+ 1 918 349 6970
commercialoklahoma.com

©2023 Cushman & Wakefield | Commercial Oklahoma. Independently Owned and Operated / A Member of the Cushman & Wakefield Alliance All rights reserved. The information contained in this communication is strictly confidential. This information has been obtained from sources believed to be reliable but has not been verified. No warranty or representation, express or implied, is made as to the condition of the property (or properties) referenced herein or as to the accuracy or completeness of the information contained herein, and same is submitted subject to errors, omissions, change of price, rental or other conditions, withdrawal without notice, and to any special listing conditions imposed by the property owner(s). Any projections, opinions or estimates are subject to uncertainty and do not signify current or future property performance.