

RETAIL AUTO DEALERSHIP

5717 E 11TH ST
TULSA, OK 74112

± 4,000 SF / ± 1.44 ACRES



CUSHMAN &
WAKEFIELD

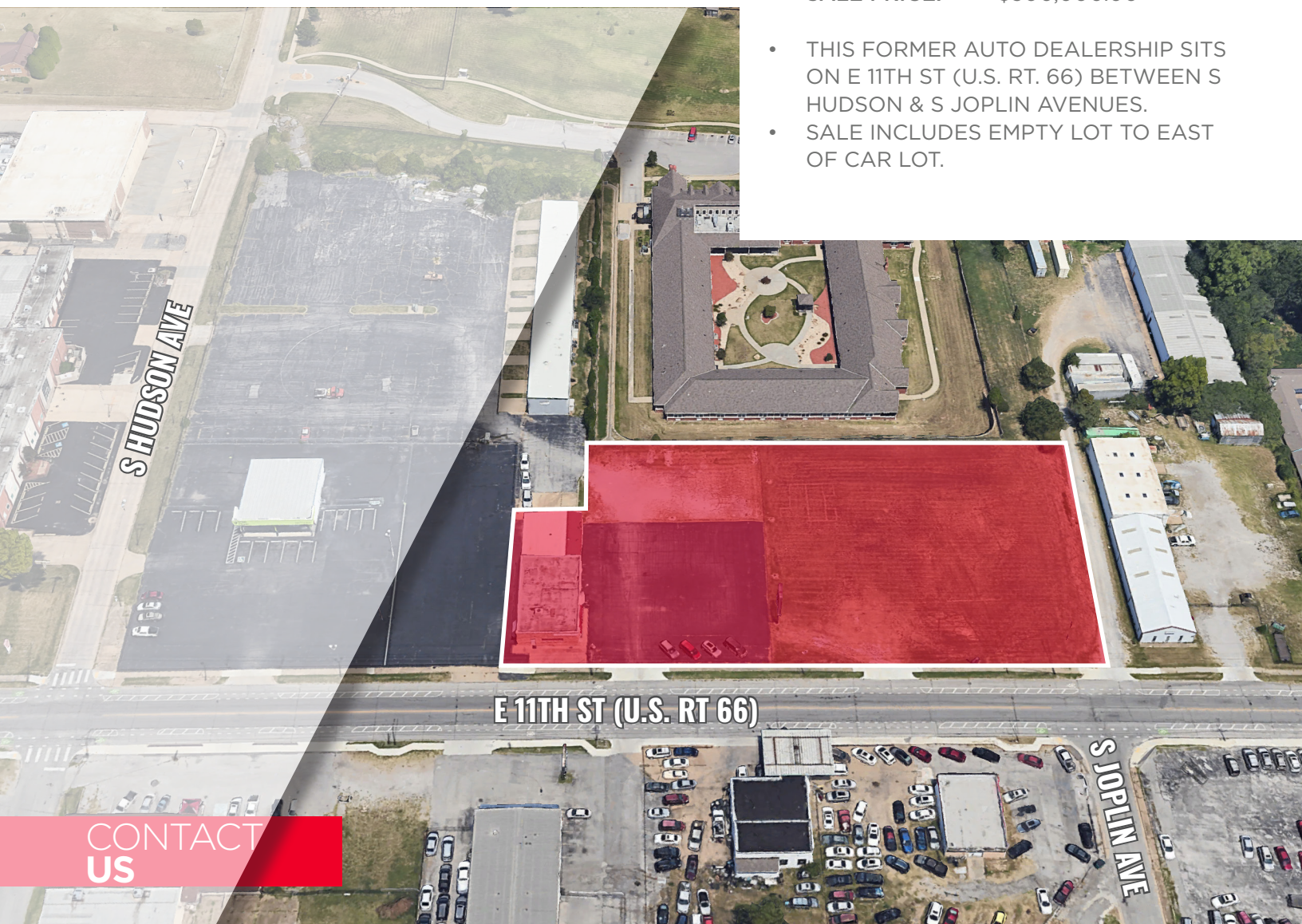
COMMERCIAL
OKLAHOMA

FOR SALE



PROPERTY HIGHLIGHTS

- **BUILDING SIZE:** ± 4,000 SF
 - **LOT SIZE:** ± 1.44 Acres
 - **ZONING:** CH
 - **BUILDING HT:** 14'
 - **FRONTAGE:** 319' ON 11TH ST
 - **PARKING:** 52 SURFACE SPACES
 - **YEAR BUILT:** 1955
 - **SALE PRICE:** \$500,000.00
-
- THIS FORMER AUTO DEALERSHIP SITS ON E 11TH ST (U.S. RT. 66) BETWEEN S HUDSON & S JOPLIN AVENUES.
 - SALE INCLUDES EMPTY LOT TO EAST OF CAR LOT.



CONTACT
US

SCOTT SCHLOTFELT
Managing Director

+1 918 359 3521

sschlotfelt@commercialoklahoma.com

NATALIE BURKE
Associate

+1 918 710 2650

nburke@commercialoklahoma.com

TULSA OFFICE

+1 918 340 6970

commercialoklahoma.com

RETAIL AUTO DEALERSHIP

5717 E 11TH ST
TULSA, OK 74112

± 4,000 SF / ± 1.44 ACRES



CUSHMAN &
WAKEFIELD

COMMERCIAL
OKLAHOMA

FOR SALE

PROPERTY PHOTOS



**SALE
PRICE:**
\$500,000.00



**TULSA
OFFICE**

111 S Elgin Ave, Suite 100, Tulsa, OK 74120
+ 1 918 340 6970
commercialoklahoma.com

©2023 Cushman & Wakefield | Commercial Oklahoma. Independently Owned and Operated / A Member of the Cushman & Wakefield Alliance All rights reserved. The information contained in this communication is strictly confidential. This information has been obtained from sources believed to be reliable but has not been verified. No warranty or representation, express or implied, is made as to the condition of the property (or properties) referenced herein or as to the accuracy or completeness of the information contained herein, and same is submitted subject to errors, omissions, change of price, rental or other conditions, withdrawal without notice, and to any special listing conditions imposed by the property owner(s). Any projections, opinions or estimates are subject to uncertainty and do not signify current or future property performance.