



MONTEREY

LEASING NOW
± **2,389 SF**



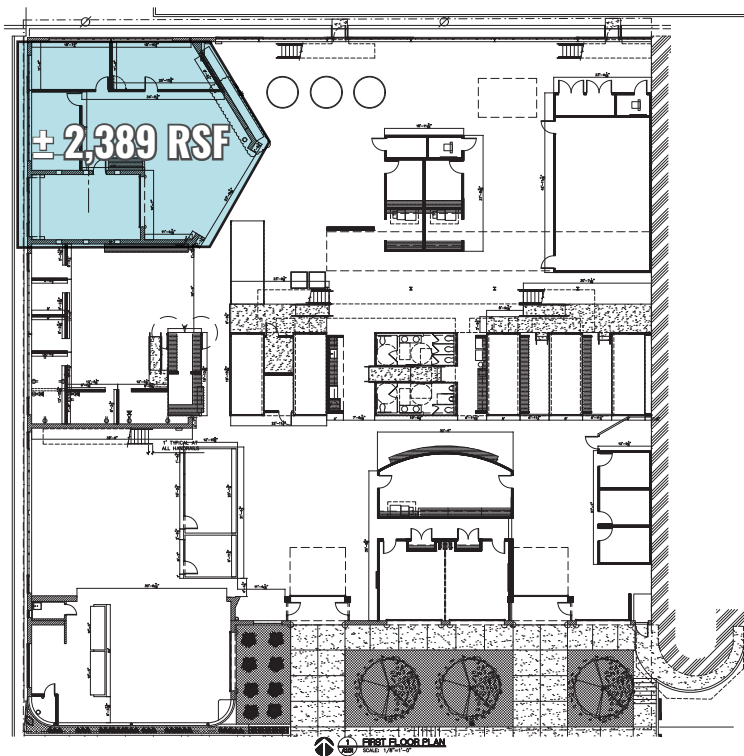
307-309 NW 13TH STREET
OKLAHOMA CITY, OK 73103

MONTEREY

307-309 NW 13TH STREET
OKLAHOMA CITY, OK 73103

NOW LEASING

Located on NW 13th between Harvey and Hudson, next to Harvey Bakery, this recently renovated building provides tenants a unique office space in the growing Midtown area. The Midtown district is a pedestrian-friendly area located just north of downtown Oklahoma City with a mix of local restaurants, neighborhood pubs and unique shops.



PROPERTY OVERVIEW

AVAILABLE SF:
± 2,389 SF

BUILDING SIZE:
± 22,000 SF

FREE SURFACE PARKING:
15 CAR PARKS

SUBMARKET:
MIDTOWN

YEAR BUILT:
1947 | 2014

LEASE RATE:
\$22.00 FSG

TRAVIS MASON
+1 405 249 0655
tmason@commercialoklahoma.com

MICAH SHERMAN
+1 405 488 5548
msherman@commercialoklahoma.com

VIVIENNE VOGLER
+1 405 570 8595
vvogler@commercialoklahoma.com



204 N Robinson Avenue, Ste. 2000 | Oklahoma City, OK 73102
+1 405 563 5000 | commercialoklahoma.com

©2024 Cushman & Wakefield | Commercial Oklahoma. All rights reserved. The material in this presentation has been prepared solely for information purposes, and is strictly confidential. Any disclosure, use, copying or circulation of this presentation (or the information contained within it) is strictly prohibited, unless you have obtained Cushman & Wakefield's prior written consent. The views expressed in this presentation are the views of the author and do not necessarily reflect the views of Cushman & Wakefield. Neither this presentation nor any part of it shall form the basis of, or be relied upon in connection with any offer, or act as an inducement to enter into any contract or commitment whatsoever. NO REPRESENTATION OR WARRANTY IS GIVEN, EXPRESS OR IMPLIED, AS TO THE ACCURACY OF THE INFORMATION CONTAINED WITHIN THIS PRESENTATION, AND CUSHMAN & WAKEFIELD IS UNDER NO OBLIGATION TO SUBSEQUENTLY CORRECT IT IN THE EVENT OF ERRORS.