

FOR LEASE



± 17,075 SF  
MIDTOWN  
OFFICE SPACE

THE  
PHILLIPS MURRAH  
BUILDING

424 NW 10TH STREET  
OKLAHOMA CITY, OK 73103







# MIDTOWN OFFICE SPACE

424 NW 10TH STREET  
OKLAHOMA CITY, OK 73103

## ± 17,075 SF FOR LEASE

### PROPERTY DETAILS

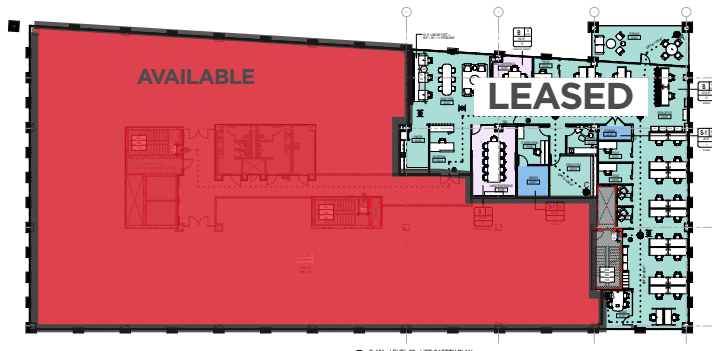
- BUILDING SIZE: ± 79,658 SF
- **SQ. FT. AVAILABLE:** ± 17,075 SF
- FLOOR: 1st & 2nd (Demisable)
- YEAR BUILT: U/C
- FLOORS: 5
- PARKING: Paid Garage
- **LEASE RATE:** \$28.00 NNN
- Join Phillips Murrah and Midtown in the newest Class "A" office and future mixed-use development coming Summer 2024. Project will feature garage parking and future on-site restaurants.

### FLOOR PLANS

1st Floor: ± 3,796 SF



2nd Floor: ± 13,279 SF



**COMMERCIAL  
OKLAHOMA**

204 N Robinson Ave, Ste 2000 | Oklahoma City, OK 73102  
+ 1 405 563 5000 | [commercialoklahoma.com](http://commercialoklahoma.com)

VIVIENNE VOGLER  
**+1 405 570 8595**

[vvogler@commercialoklahoma.com](mailto:vvogler@commercialoklahoma.com)

MICAH SHERMAN  
**+1 405 488 5548**

[msherman@commercialoklahoma.com](mailto:msherman@commercialoklahoma.com)

TRAVIS MASON  
**+1 405 297 9924**

[tmason@commercialoklahoma.com](mailto:tmason@commercialoklahoma.com)

©2024 Cushman & Wakefield | Commercial Oklahoma. Independently Owned and Operated / A Member of the Cushman & Wakefield Alliance  
All rights reserved. The information contained in this communication is strictly confidential. This information has been obtained from sources believed to be reliable but has not been verified. No warranty or representation, express or implied, is made as to the condition of the property (or properties) referenced herein or as to the accuracy or completeness of the information contained herein, and same is submitted subject to errors, omissions, change of price, rental or other conditions, withdrawal without notice, and to any special listing conditions imposed by the property owner(s). Any projections, opinions or estimates are subject to uncertainty and do not signify current or future property performance.