

**INDUSTRIAL LAND**  
SW 13TH & MACARTHUR  
OKLAHOMA CITY, OK 73128

**± 14.20 ACRES**



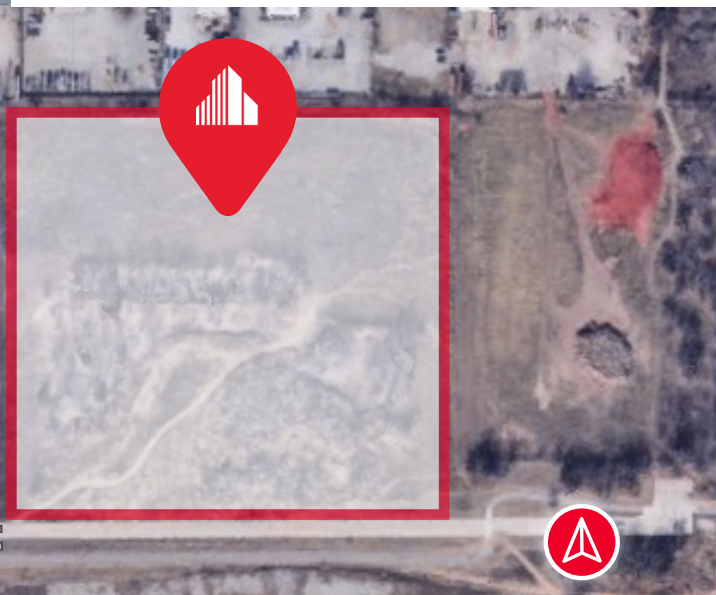
CUSHMAN &  
WAKEFIELD

COMMERCIAL  
OKLAHOMA

**FOR SALE**

## PROPERTY HIGHLIGHTS

- **LOT SIZE:** ± 14.20 ACRES
- **ZONING:** I-2, PUD-23A
- This industrial land is located east of S MacArthur Ave and North of SW 13th Street in Oklahoma City. Located a few blocks from I-40 with easy highway access. Public utilities are available.



**SALES PRICE: \$1,250,000**

**CONTACT US**

204 N Robinson Ave, Suite 2000, Oklahoma City, OK 73102  
+ 1 405 563 5000  
[commercialoklahoma.com](http://commercialoklahoma.com)



ALLAN MEADORS, SIOR  
**+1 405 778 9158**  
[ameadors@commercialoklahoma.com](mailto:ameadors@commercialoklahoma.com)

CALEB COX  
**+1 405 923 6240**  
[ccox@commercialoklahoma.com](mailto:ccox@commercialoklahoma.com)

SARAH BOLDING  
**+1 405 896 5614**  
[sbolding@commercialoklahoma.com](mailto:sbolding@commercialoklahoma.com)

©2023 Cushman & Wakefield | Commercial Oklahoma. Independently Owned and Operated / A Member of the Cushman & Wakefield Alliance All rights reserved. The information contained in this communication is strictly confidential. This information has been obtained from sources believed to be reliable but has not been verified. No warranty or representation, express or implied, is made as to the condition of the property (or properties) referenced herein or as to the accuracy or completeness of the information contained herein, and same is submitted subject to errors, omissions, change of price, rental or other conditions, withdrawal without notice, and to any special listing conditions imposed by the property owner(s). Any projections, opinions or estimates are subject to uncertainty and do not signify current or future property performance.