

FOR LEASE | BUILDING 14
6200 N CLASSEN BOULEVARD
OKLAHOMA CITY, OK 73116



CUSHMAN &
WAKEFIELD

COMMERCIAL
OKLAHOMA



CHESAPEAKE CAMPUS

**LEASE
RATE:**
\$21.00 NNN

CLASS "A" OFFICE FOR LEASE

PROPERTY HIGHLIGHTS

Located south of NW 63rd on Classen Blvd, Building 14 is on the east side of the Chesapeake Campus and features over 800 offices on 7 floors. The area is quickly densifying with new high-density multifamily and hotel development within walking distance to OKC's most upscale shopping centers, The Triangle at Classen Curve, Classen Curve and Nichols Hills Plaza.

- **BUILDING SIZE:** ± 249,009 SF
- **BASEMENT:** ± 49,625 SF
- **1ST FLOOR:** ± 37,146 SF
- **2ND FLOOR:** ± 37,146 SF
- **3RD FLOOR:** ± 37,146 SF
- **4TH FLOOR:** ± 37,146 SF
- **5TH FLOOR:** ± 37,146 SF
- **6TH FLOOR:** ± 13,654 SF
- **FLOOR PLATE RANGE:** ± 13,654 - 49,625 SF
- **OFFICE COUNT:** 836
- **PARKING RATIO:** 5.8 /1,000
- **CAR PARKS:** 1,439

FLOORS **7**
LOBBIES **18**
BREAK /
KITCHEN **17**
RESTROOMS **38**

**CONTACT
US**

MICAH SHERMAN
+1 405 488 5548
msherman@commercialoklahoma.com

VIVIENNE VOGLER
+1 405 570 8595
vvogler@commercialoklahoma.com

TRAVIS MASON
+1 405 249 0655
tmason@commercialoklahoma.com

FOR LEASE | BUILDING 14

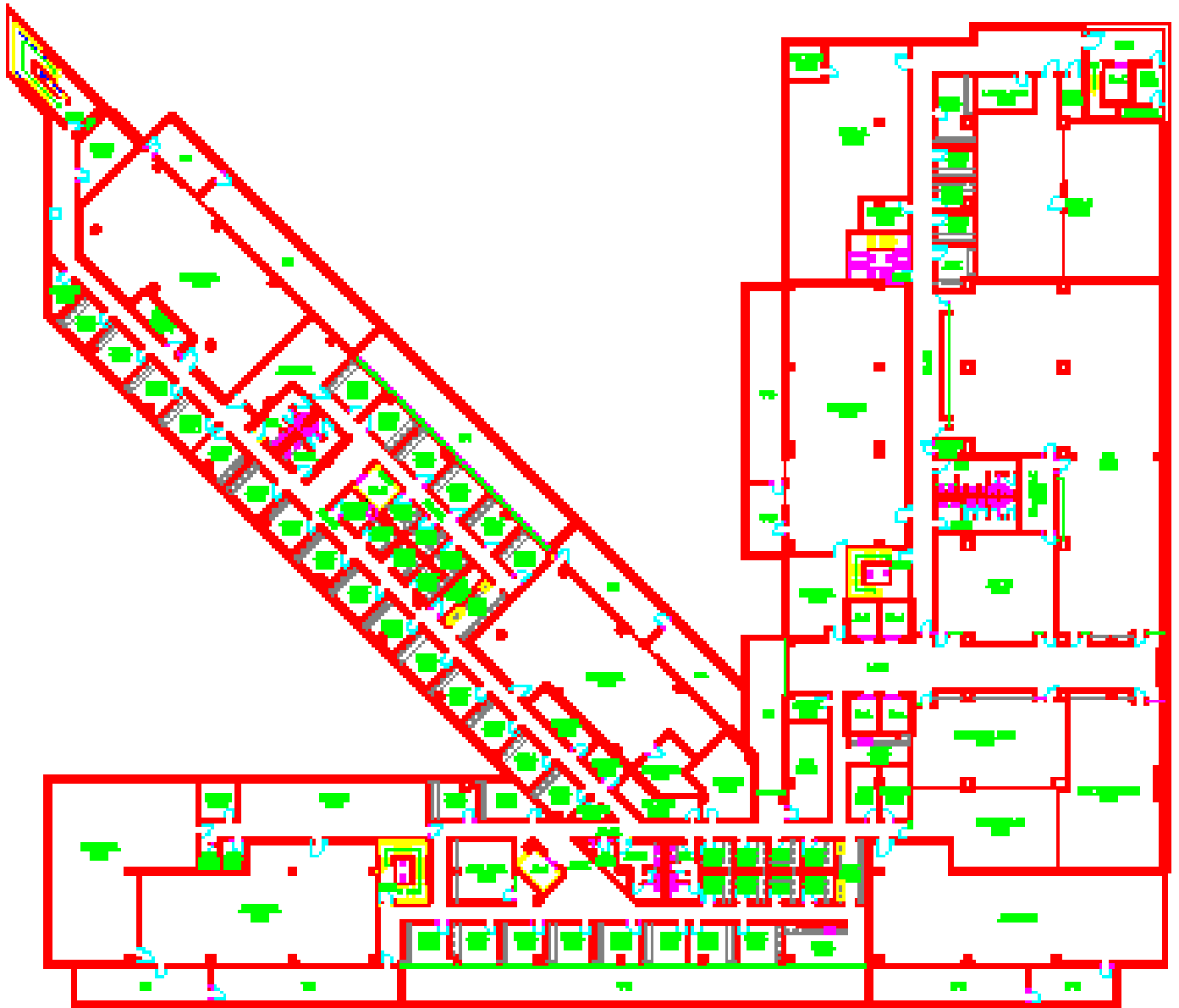
6200 N CLASSEN BOULEVARD
OKLAHOMA CITY, OK 73116



CUSHMAN &
WAKEFIELD

COMMERCIAL
OKLAHOMA

BASEMENT ± 49,625 SF



FLOOR INFO

OFFICES	TRAINING ROOMS	RESTROOMS	BREAK / KITCHEN	LOBBIES
102	2	6	2	2

FOR LEASE | BUILDING 14

6200 N CLASSEN BOULEVARD
OKLAHOMA CITY, OK 73116



COMMERCIAL
OKLAHOMA

1ST FLOOR
± 37,146 SF



FLOOR INFO

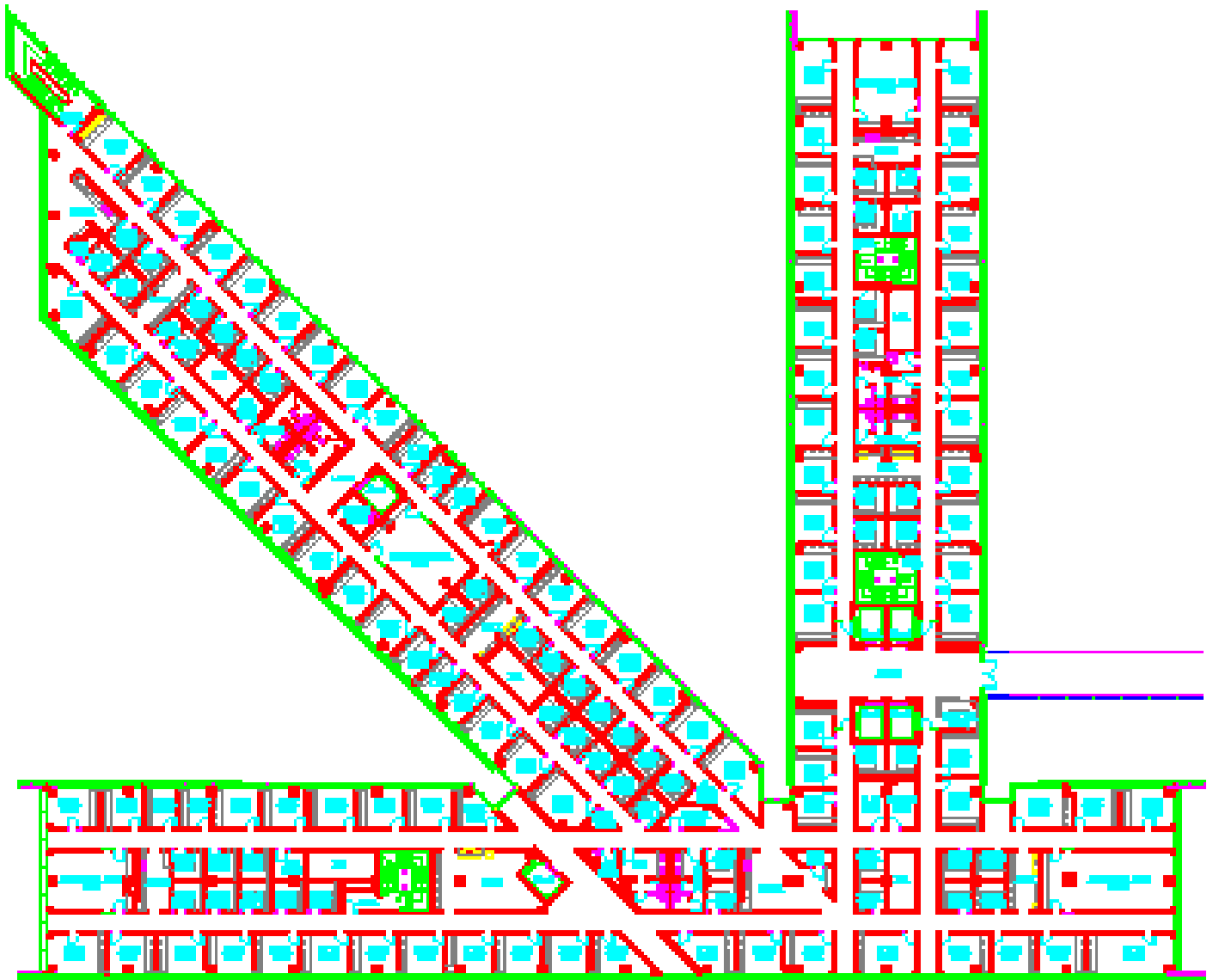
OFFICES	TRAINING ROOMS	RESTROOMS	BREAK / KITCHEN	LOBBIES
143	4	6	3	3

FOR LEASE | BUILDING 14
6200 N CLASSEN BOULEVARD
OKLAHOMA CITY, OK 73116



COMMERCIAL
OKLAHOMA

2ND FLOOR
± 37,146 SF



**FLOOR
INFO**

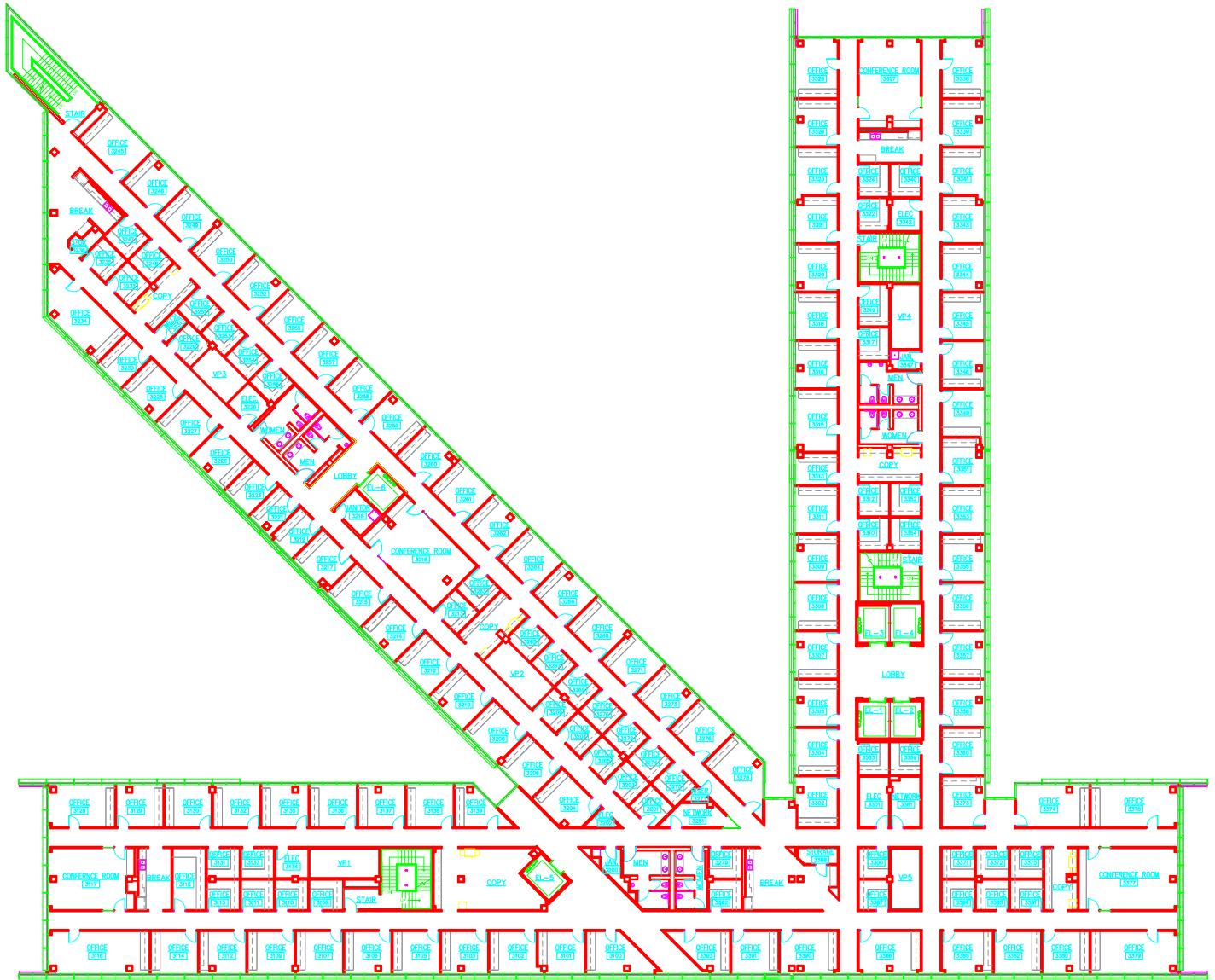
OFFICES **147** TRAINING ROOMS **4** RESTROOMS **6** BREAK / KITCHEN **3** LOBBIES **3**

FOR LEASE | BUILDING 14

6200 N CLASSEN BOULEVARD
OKLAHOMA CITY, OK 73116



3RD FLOOR
± 37,146 SF



FLOOR INFO

OFFICES	TRAINING ROOMS	RESTROOMS	BREAK / KITCHEN	LOBBIES
148	4	6	3	3

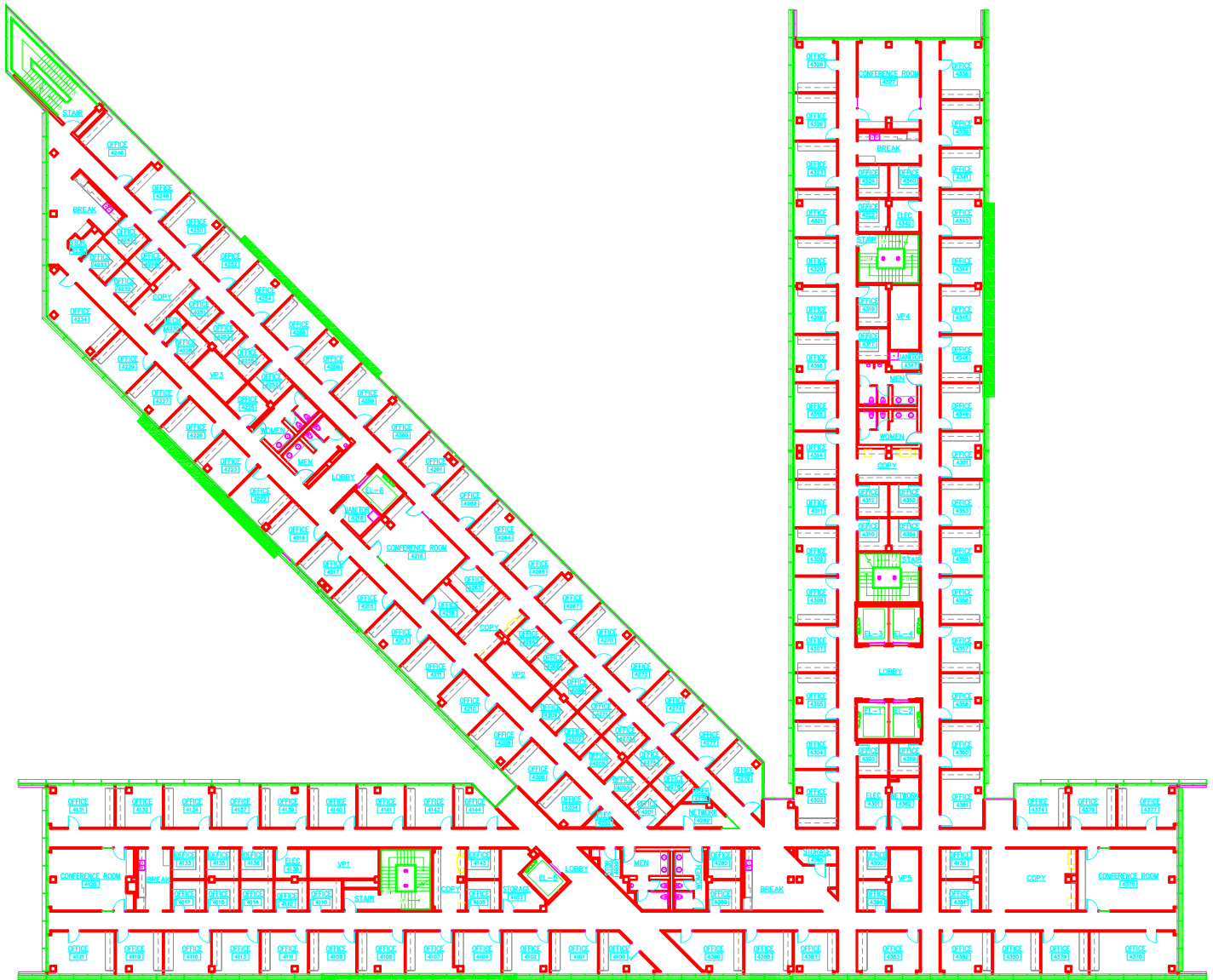
FOR LEASE | BUILDING 14

6200 N CLASSEN BOULEVARD
OKLAHOMA CITY, OK 73116



COMMERCIAL
OKLAHOMA

4TH FLOOR
± 37,146 SF



FLOOR INFO

OFFICES 148	TRAINING ROOMS 4	RESTROOMS 6	BREAK / KITCHEN 3	LOBBIES 3
-----------------------	----------------------------	-----------------------	-----------------------------	---------------------

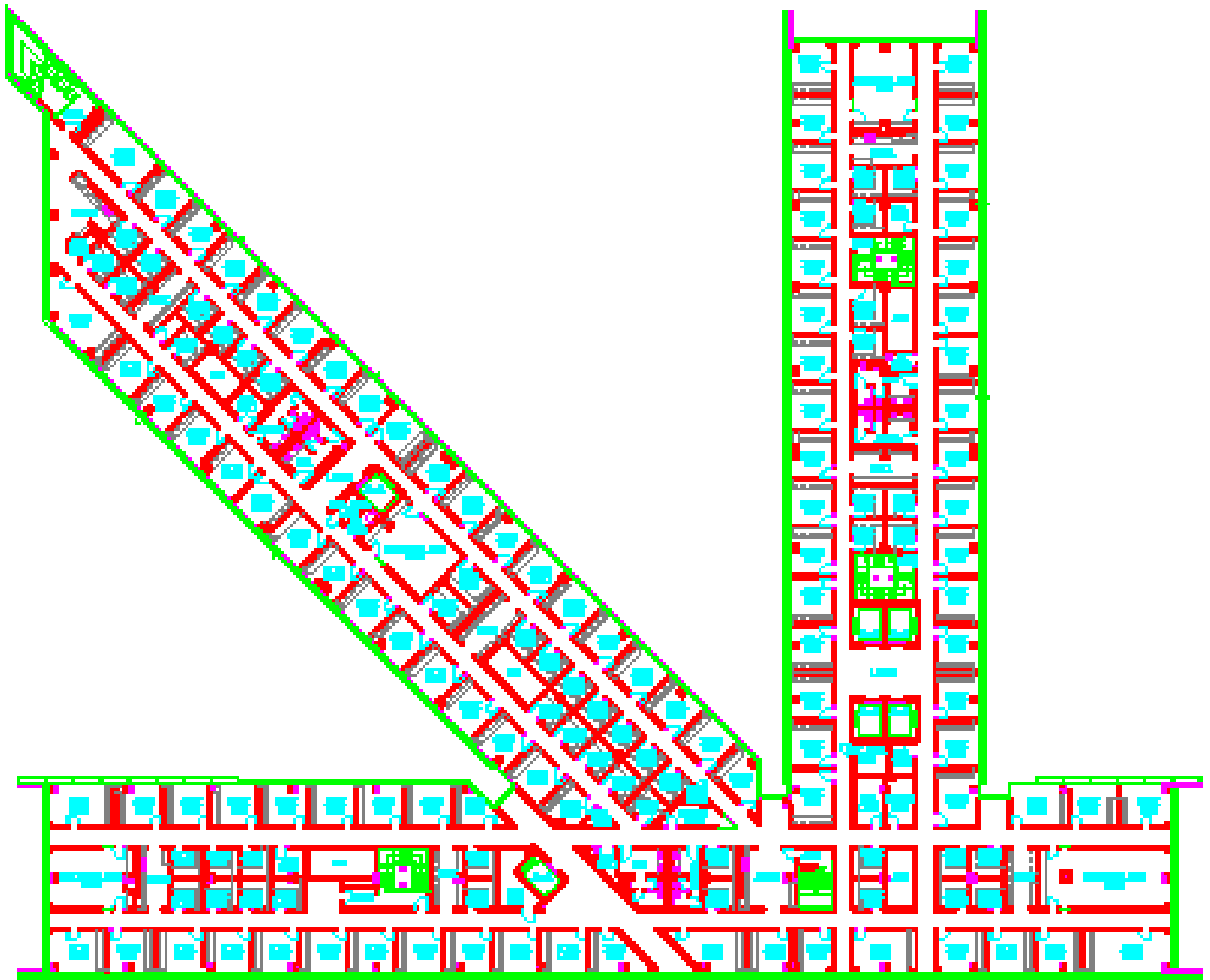
FOR LEASE | BUILDING 14

6200 N CLASSEN BOULEVARD
OKLAHOMA CITY, OK 73116



COMMERCIAL
OKLAHOMA

5TH FLOOR
± 37,146 SF



FLOOR INFO

OFFICES	TRAINING ROOMS	RESTROOMS	BREAK / KITCHEN	LOBBIES
147	4	6	3	3

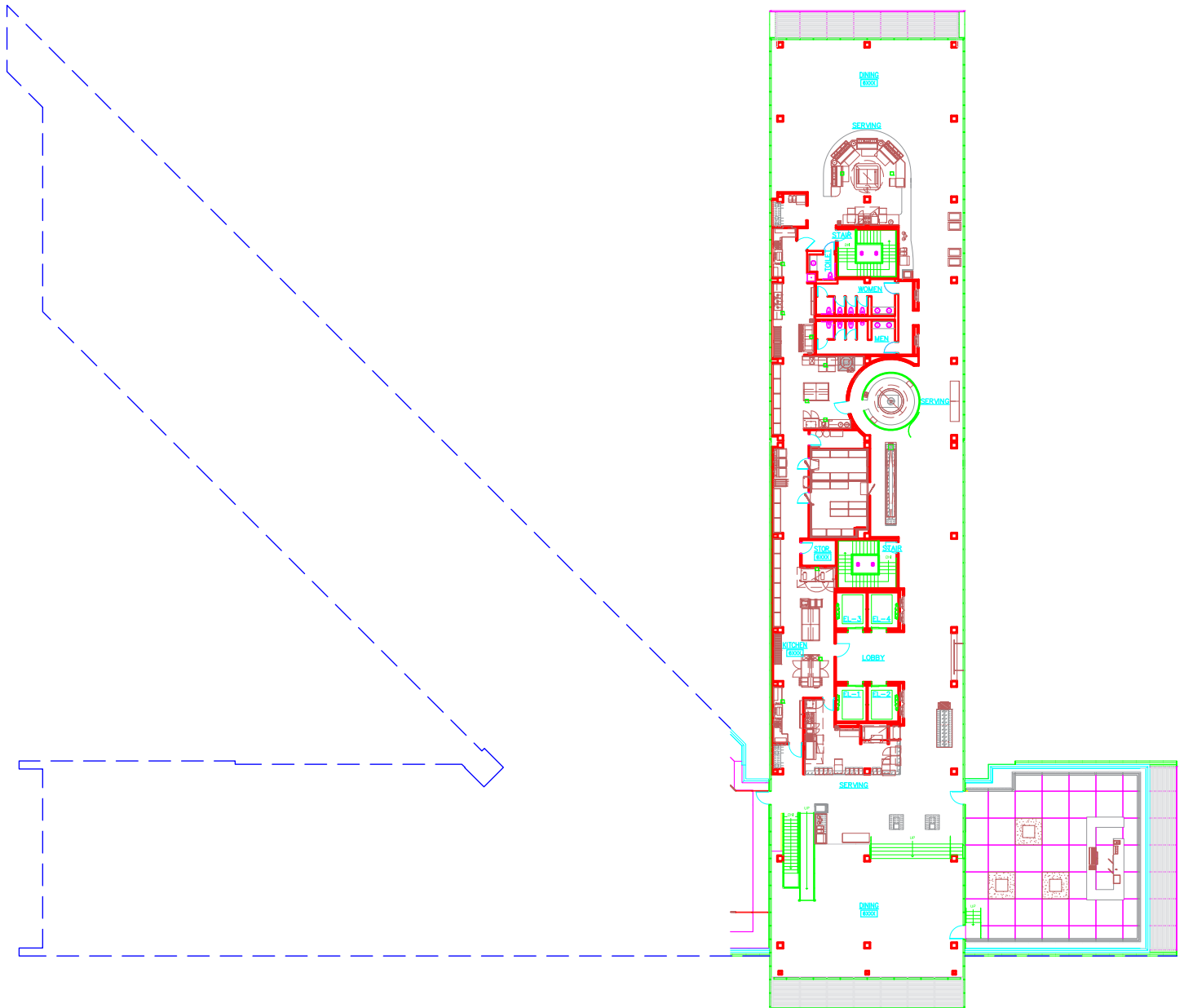
FOR LEASE | BUILDING 14

6200 N CLASSEN BOULEVARD
OKLAHOMA CITY, OK 73116



COMMERCIAL
OKLAHOMA

6TH FLOOR ± 13,654 SF



FLOOR INFO

OFFICES	TRAINING ROOMS	RESTROOMS	BREAK / KITCHEN	LOBBIES
1	0	2	0	1

FOR LEASE | BUILDING 14
6200 N CLASSEN BOULEVARD
OKLAHOMA CITY, OK 73116



CUSHMAN &
WAKEFIELD

COMMERCIAL
OKLAHOMA



CHESAPEAKE CAMPUS

CONTACT
US

MICAH SHERMAN
+1 405 488 5548
msherman@commercialoklahoma.com

VIVIENNE VOGLER
+1 405 570 8595
vvogler@commercialoklahoma.com

TRAVIS MASON
+1 405 249 0655
tmason@commercialoklahoma.com

OKLAHOMA
CITY

204 N Robinson Ave, Suite 2000, Oklahoma City, OK 73102
+ 1 405 563 5000
commercialoklahoma.com



©2024 Cushman & Wakefield | Commercial Oklahoma. Independently Owned and Operated / A Member of the Cushman & Wakefield Alliance All rights reserved. The information contained in this communication is strictly confidential. This information has been obtained from sources believed to be reliable but has not been verified. No warranty or representation, express or implied, is made as to the condition of the property (or properties) referenced herein or as to the accuracy or completeness of the information contained herein, and same is submitted subject to errors, omissions, change of price, rental or other conditions, withdrawal without notice, and to any special listing conditions imposed by the property owner(s). Any projections, opinions or estimates are subject to uncertainty and do not signify current or future property performance.