

NOW AVAILABLE

CUSHMAN &
WAKEFIELD

COMMERCIAL
OKLAHOMA

THE DAVENPORT

405 N Main Street
Tulsa, OK 74120

**FOR SALE OR
LEASE**

± 2,500-5,000 SF

CLASS "A" OFFICE

Rates available upon request

PROPERTY HIGHLIGHTS

Total Building Size: ± 80,000 SF

Located in the heart of Tulsa's Arts District

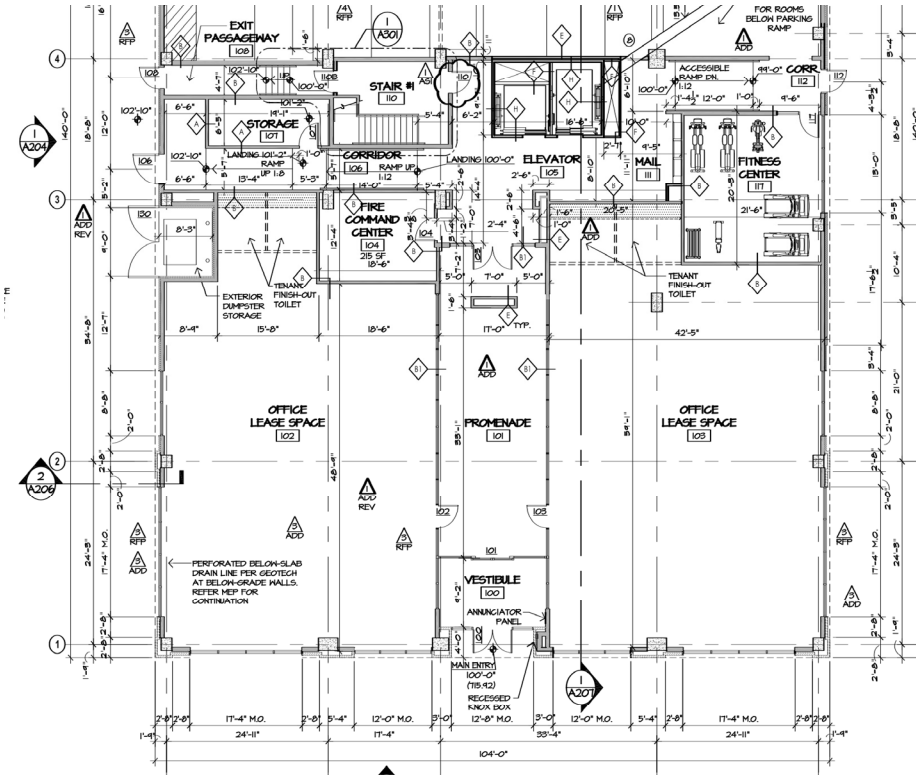
Part of a luxury apartment complex featuring
Class "A" Office and Residential Space

Open floor plan office space

Easy access to all major highways

FLOOR PLAN | FIRST FLOOR

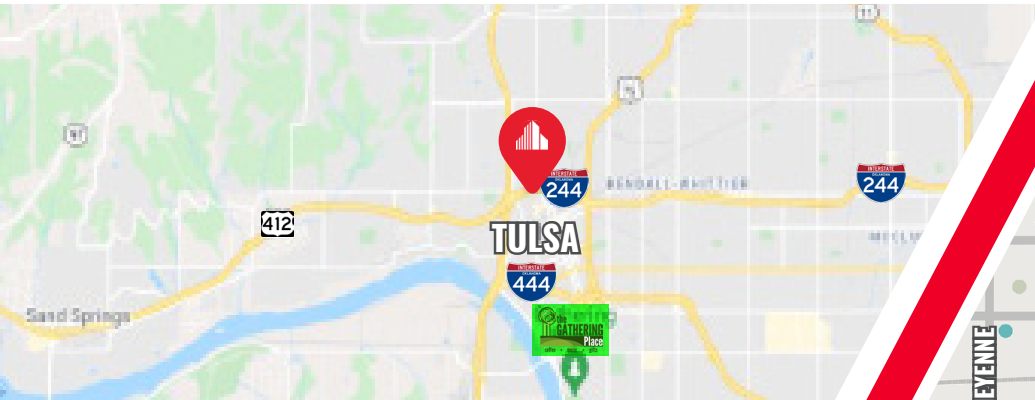
405 N MAIN STREET
Tulsa, OK 74120



AREA AMENITIES

- OK POP Museum «
- Cain's Ballroom «
- ONEOK Field «
- Guthrie Green «
- BOK Center «

Walking distance to 40+ restaurants, coffee shops, bars and entertainment



CONTACT

MIKE MURNAN
+1 918 895 7699
mmurnan@commercialoklahoma.com



111 S Elgin Avenue, Suite 100 | Tulsa, OK 74120
commercialoklahoma.com

©2023 Cushman & Wakefield. All rights reserved. The information contained in this communication is strictly confidential. This information has been obtained from sources believed to be reliable but has not been verified. NO WARRANTY OR REPRESENTATION, EXPRESS OR IMPLIED, IS MADE AS TO THE CONDITION OF THE PROPERTY (OR PROPERTIES) REFERENCED HEREIN OR AS TO THE ACCURACY OR COMPLETENESS OF THE INFORMATION CONTAINED HEREIN, AND SAME IS SUBMITTED SUBJECT TO ERRORS, OMISSIONS, CHANGE OF PRICE, RENTAL OR OTHER CONDITIONS, WITHDRAWAL WITHOUT NOTICE, AND TO ANY SPECIAL LISTING CONDITIONS IMPOSED BY THE PROPERTY OWNER(S). ANY PROJECTIONS, OPINIONS OR ESTIMATES ARE SUBJECT TO UNCERTAINTY AND DO NOT SIGNIFY CURRENT OR FUTURE PROPERTY PERFORMANCE.



- RESTAURANTS
- ENTERTAINMENT
- PARKS
- MUSEUMS, ART GALLERIES
- LOUNGES, CLUBS, PUBS
- COFFEE HOUSE
- HOTELS
- PARKING