



FOR LEASE | ± 16,845 SF

INDUSTRIAL WAREHOUSE

1610 NE 4TH STREET, OKC, OK 73117



CUSHMAN & WAKEFIELD

COMMERCIAL OKLAHOMA

FOR LEASE

1610 NE 4TH STREET
Oklahoma City, OK 73117

Property Features

Specialized warehouse previously used as a cash distribution facility; features high security with a completely fenced parking lot and yard, two secure vaults, multiple counting rooms, generator and high security entrance.

Building Size:	± 16,845 SF
Warehouse:	± 13,548 SF
Office Area:	± 3,297 SF
Site Area:	± 1.33 Acres Paved & Fenced
Clear Height:	10' - 16'
Drive-Ins:	(2) 14' x 10'
Storage Shed:	± 400 SF
Power:	Heavy
Lease Rate:	\$9.00 NNN

FOR MORE INFORMATION, CONTACT:

ALLAN MEADORS, SIOR

Director
ameadors@commercialoklahoma.com
+1 405 778 9158

CALEB COX

Senior Associate
ccox@commercialoklahoma.com
+1 405 923 6240

SARAH BOLDING

Associate
sbolding@commercialoklahoma.com
+1 405 896 5614



2ND FLOOR OFFICE SPACE



± 13,548 SF WAREHOUSE

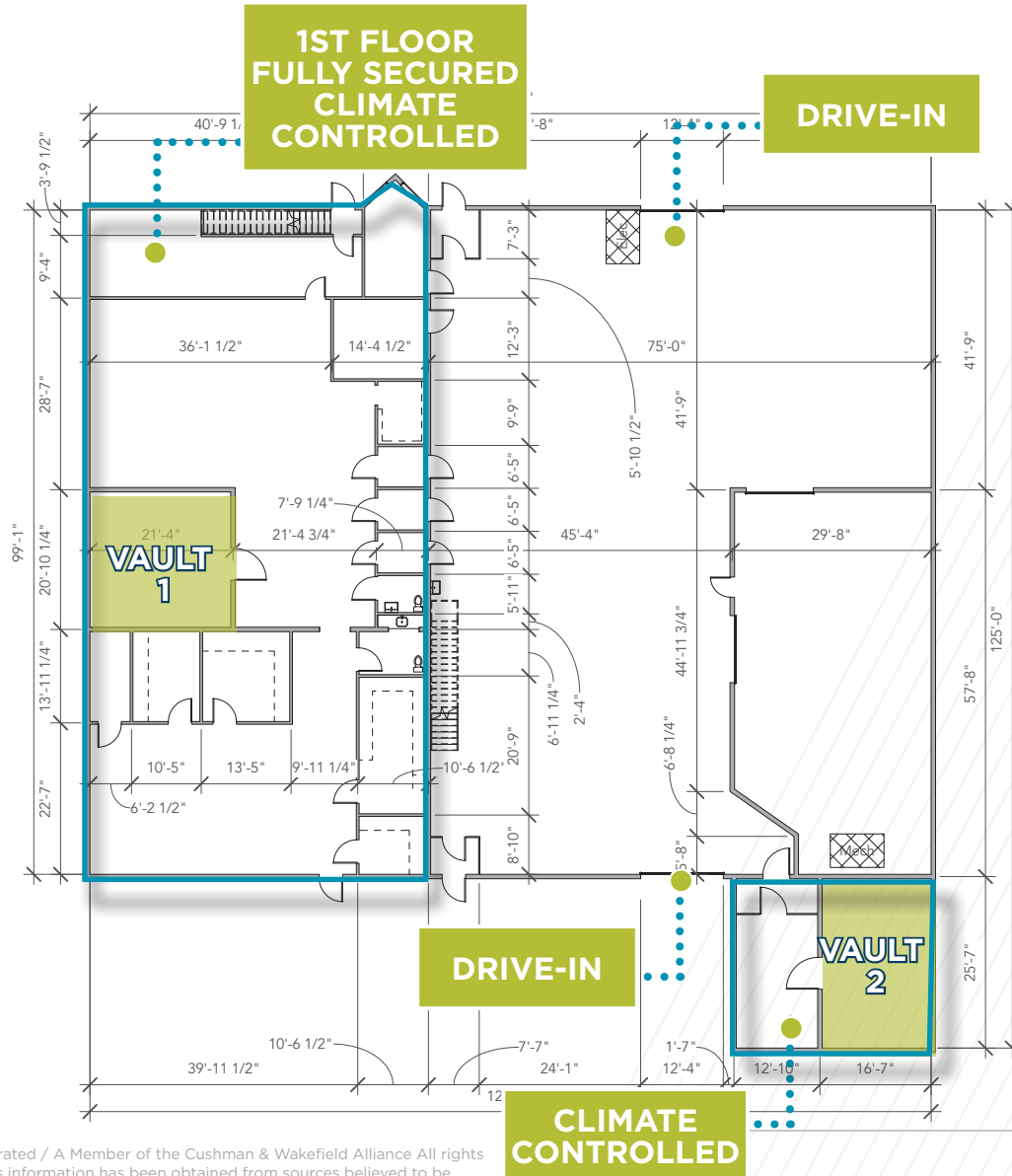
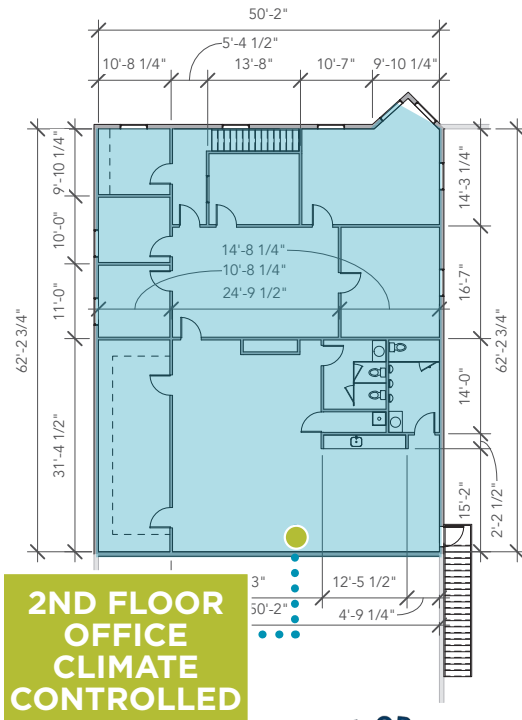
FOR LEASE

1610 NE 4TH STREET
Oklahoma City, OK 73117



COMMERCIAL
OKLAHOMA

Site Plan



Floor Plans
A001

©2023 Cushman & Wakefield | Commercial Oklahoma. Independently Owned and Operated / A Member of the Cushman & Wakefield Alliance All rights reserved. The information contained in this communication is strictly confidential. This information has been obtained from sources believed to be reliable but has not been verified. NO WARRANTY OR REPRESENTATION, EXPRESS OR IMPLIED, IS MADE AS TO THE CONDITION OF THE PROPERTY (OR PROPERTIES) REFERENCED HEREIN OR AS TO THE ACCURACY OR COMPLETENESS OF THE INFORMATION CONTAINED HEREIN, AND SAME IS SUBMITTED SUBJECT TO ERRORS, OMISSIONS, CHANGE OF PRICE, RENTAL OR OTHER CONDITIONS, WITHDRAWAL WITHOUT NOTICE, AND TO ANY SPECIAL LISTING CONDITIONS IMPOSED BY THE PROPERTY OWNER(S). ANY PROJECTIONS, OPINIONS OR ESTIMATES ARE SUBJECT TO UNCERTAINTY AND DO NOT SIGNIFY CURRENT OR FUTURE PROPERTY PERFORMANCE.