



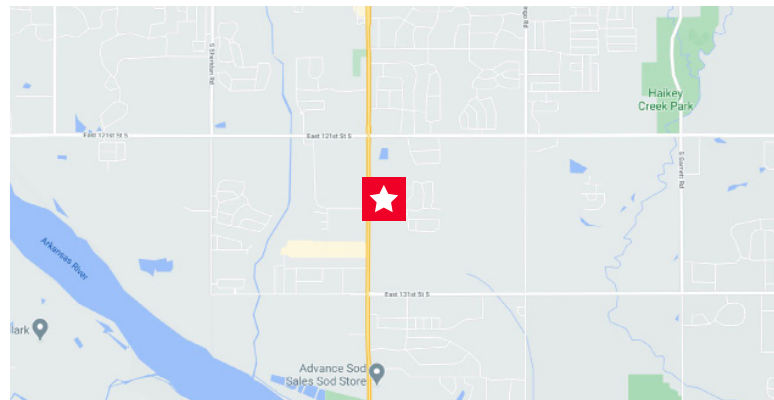
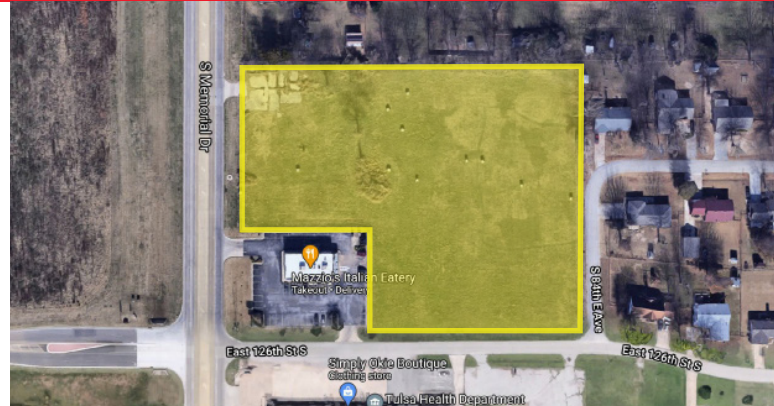
4.5 ACRES WITH MEMORIAL FRONTAGE IN BIXBY

PROPERTY DETAILS

- Asking Price: \$11.00/SF
- +/- 4.5 Acres
- Zoned CS (Commercial)
- Prime Development Land with Great Frontage on Memorial in Bixby just South of 121st Street

AREA DEMOGRAPHICS

POPULATION	1 MILE	3 MILE	5 MILE
2020 Total Population:	5,551	40,477	112,404
2025 Population Projection:	5,964	41,831	115,077
Pop Growth 2020-2025:	1.5%	0.7%	0.5%
Average Age:	36	39	38
HOUSEHOLDS			
2020 Total Households:	2,132	14,984	43,309
HH Growth 2010-2020:	7.1%	2.1%	1.4%
Avg HH Income:	\$97,625	\$131,515	\$116,077
Median Home Value:	\$227,605	\$287,058	\$239,812



PROPERTY CONTACTS

Jared Andresen, SIOR
President
+1 918 359 3522
jandresen@commercialoklahoma.com
LIC #154615

Scott Schlotfelt
Managing Director
+1 918 359 3521
sschlotfelt@commercialoklahoma.com
LIC #154130

Cushman & Wakefield Commercial Oklahoma
111 S Elgin Ave, Suite 100
Tulsa, Oklahoma 74120
+1 918 340 6970
commercialoklahoma.com

Independently Owned and Operated / A Member of the Cushman & Wakefield Alliance

Cushman & Wakefield Copyright 2021. No warranty or representation, express or implied, is made to the accuracy or completeness of the information contained herein, and same is submitted subject to errors, omissions, change of price, rental or other conditions, withdrawal without notice, and to any special listing conditions imposed by the property owner(s). As applicable, we make no representation as to the condition of the property (or properties) in question.