

FOR LEASE

6300 N CLASSEN BOULEVARD
OKLAHOMA CITY, OK 73116



CUSHMAN &
WAKEFIELD

COMMERCIAL
OKLAHOMA

BUILDING 13



LEASE RATE:

\$21.00 NNN

PROPERTY HIGHLIGHTS

Located at the corner of NW 63rd & Classen Blvd, Building 13 is on the east side of Chesapeake Campus and features a 5 story parking garage. The area is quickly densifying with new high-density multifamily and hotel development within walking distance to OKC's most upscale shopping centers, The Triangle at Classen Curve, Classen Curve and Nichols Hills Plaza.

CLASS "A" OFFICE FOR LEASE

- **BUILDING SIZE:** ± 134,229 SF
- **BASEMENT:** ± 26,304 SF
- **1ST FLOOR:** ± 20,799 SF
- **2ND FLOOR:** ± 29,042 SF
- **3RD FLOOR:** ± 29,042 SF
- **4TH FLOOR:** ± 29,042 SF
- **FLOOR PLATE RANGE:** ± 20,799 - 29,042 SF
- **OFFICE COUNT:** 520
- **PARKING RATIO:** 6.61 /1,000
- **CAR PARKS:** 866

CONTACT
US

DAVID MEADOWS
+1 405 240 8757

dmeadows@commercialoklahoma.com

MICAH SHERMAN
+1 405 488 5548

msherman@commercialoklahoma.com

TRAVIS MASON
+1 405 249 0655

tmason@commercialoklahoma.com

FOR LEASE

6300 N CLASSEN BOULEVARD OKLAHOMA CITY, OK 73116

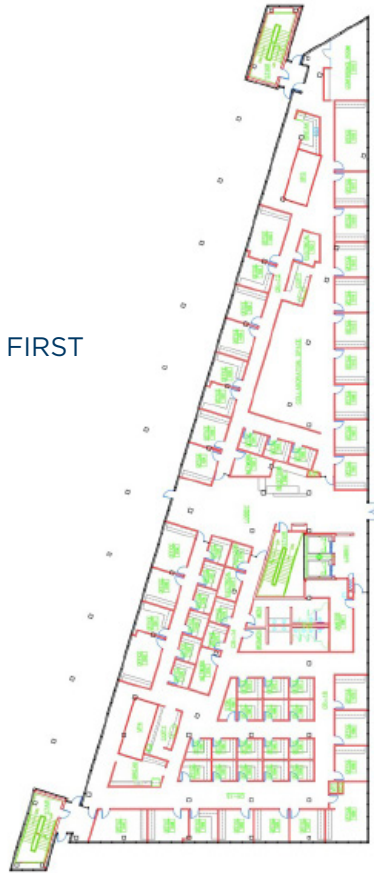


FLOOR PLANS

BASEMENT



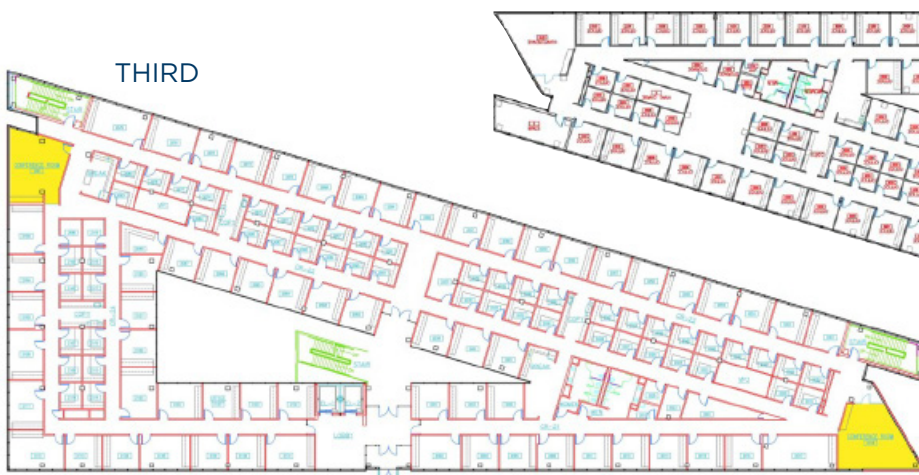
FIRST



SECOND



THIRD



FOURTH



**OKLAHOMA
CITY**

204 N Robinson Ave, Suite 2000, Oklahoma City, OK 73102
+ 1 405 563 5000
commercialoklahoma.com

©2023 Cushman & Wakefield | Commercial Oklahoma. Independently Owned and Operated / A Member of the Cushman & Wakefield Alliance All rights reserved. The information contained in this communication is strictly confidential. This information has been obtained from sources believed to be reliable but has not been verified. No warranty or representation, express or implied, is made as to the condition of the property (or properties) referenced herein or as to the accuracy or completeness of the information contained herein, and same is submitted subject to errors, omissions, change of price, rental or other conditions, withdrawal without notice, and to any special listing conditions imposed by the property owner(s). Any projections, opinions or estimates are subject to uncertainty and do not signify current or future property performance.